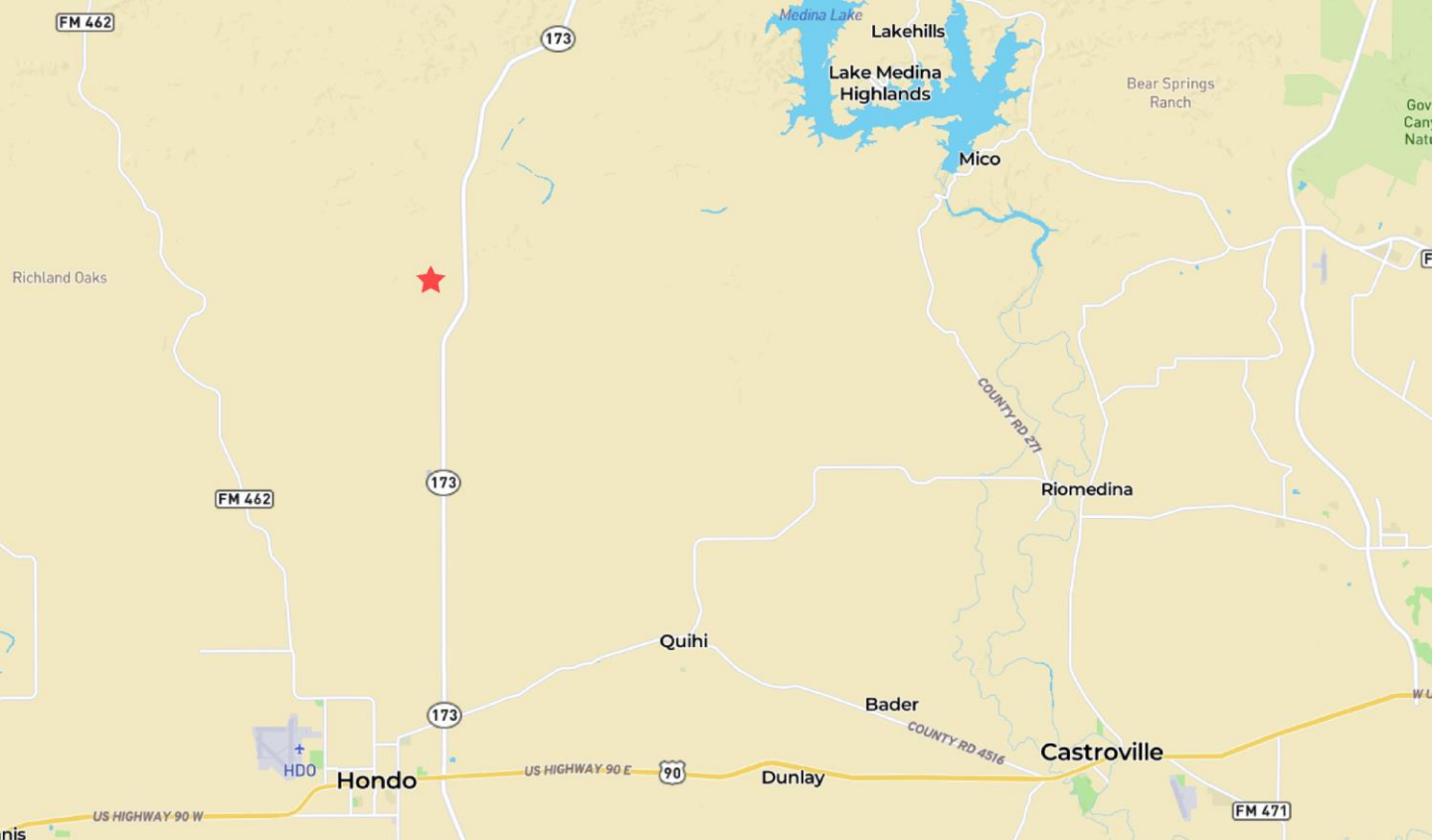




450 CR 246  
11.79 ± Acres, Hondo, Texas





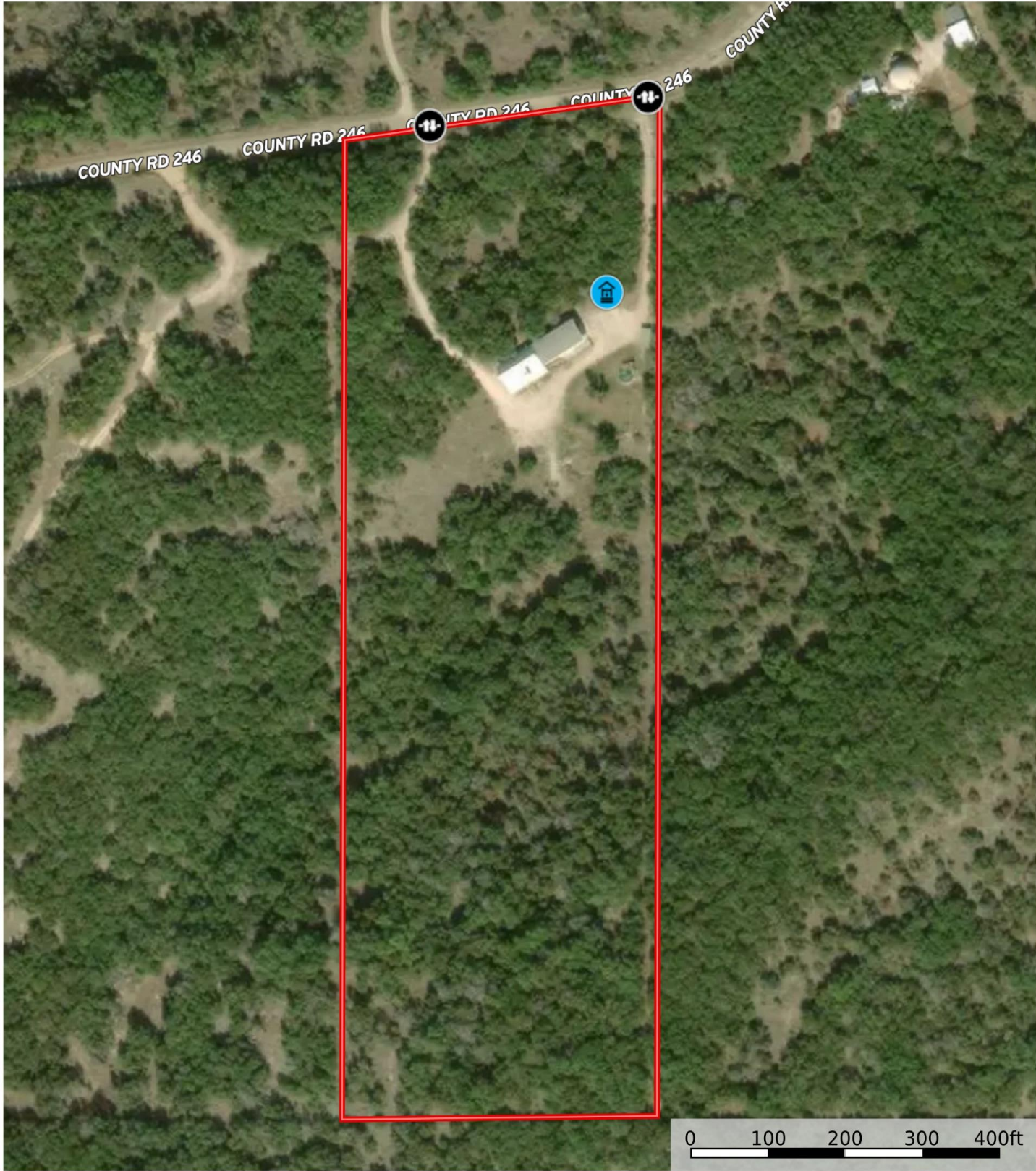
Ideally located in rolling hills of Medina County approximately 10 miles northwest of Hondo and the South Texas Regional Airport and 21 miles south of Bandera with frontage on paved County Road 246.



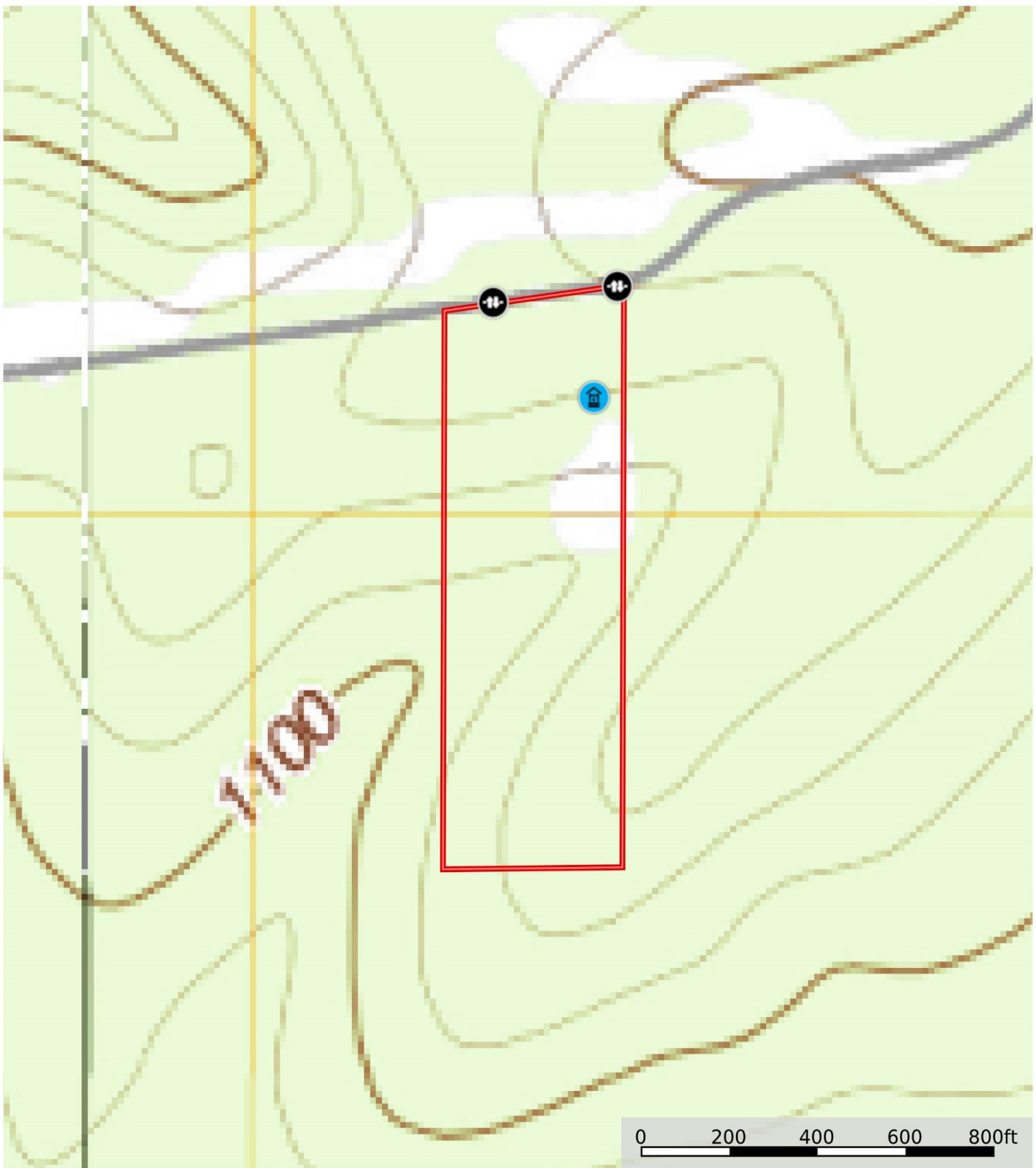
### Features

- 11.79 Acres
- 2 bedroom/ 2 bathroom
- Fireplace
- Separate Guest quarters
- Carport
- Hill Country views
- Water well





Well Gate Boundary



 Well     Gate     Boundary





This custom single story rock home consists of 2 bedrooms and 2 baths, a kitchen that is open to the living room and dining area, and a utility room that leads to the covered breezeway. There is tile flooring throughout, vaulted ceilings, and a masonry fireplace. Across the breezeway is the guest quarters that has one large bedroom, a closet, a full size bath, a two car carport, and storage area. The land is covered with Live Oaks and native brush.

























