



Gruber Ranch Sales

Representing the Best of Texas



3 Ridge Ranch
283 ± Acres, Hondo, Texas



The 3 Ridge Ranch is situated in one of the most scenic areas of the Texas Hill Country roughly 19 miles north of Hondo and the South Texas Regional Airport and just south of the Bandera County line off County Road 2412. This picturesque ranch is located in the gated Peach Tree Ranch community where you can leave the hustle and bustle behind and where the views from the ridge tops go on for miles and miles in every direction.



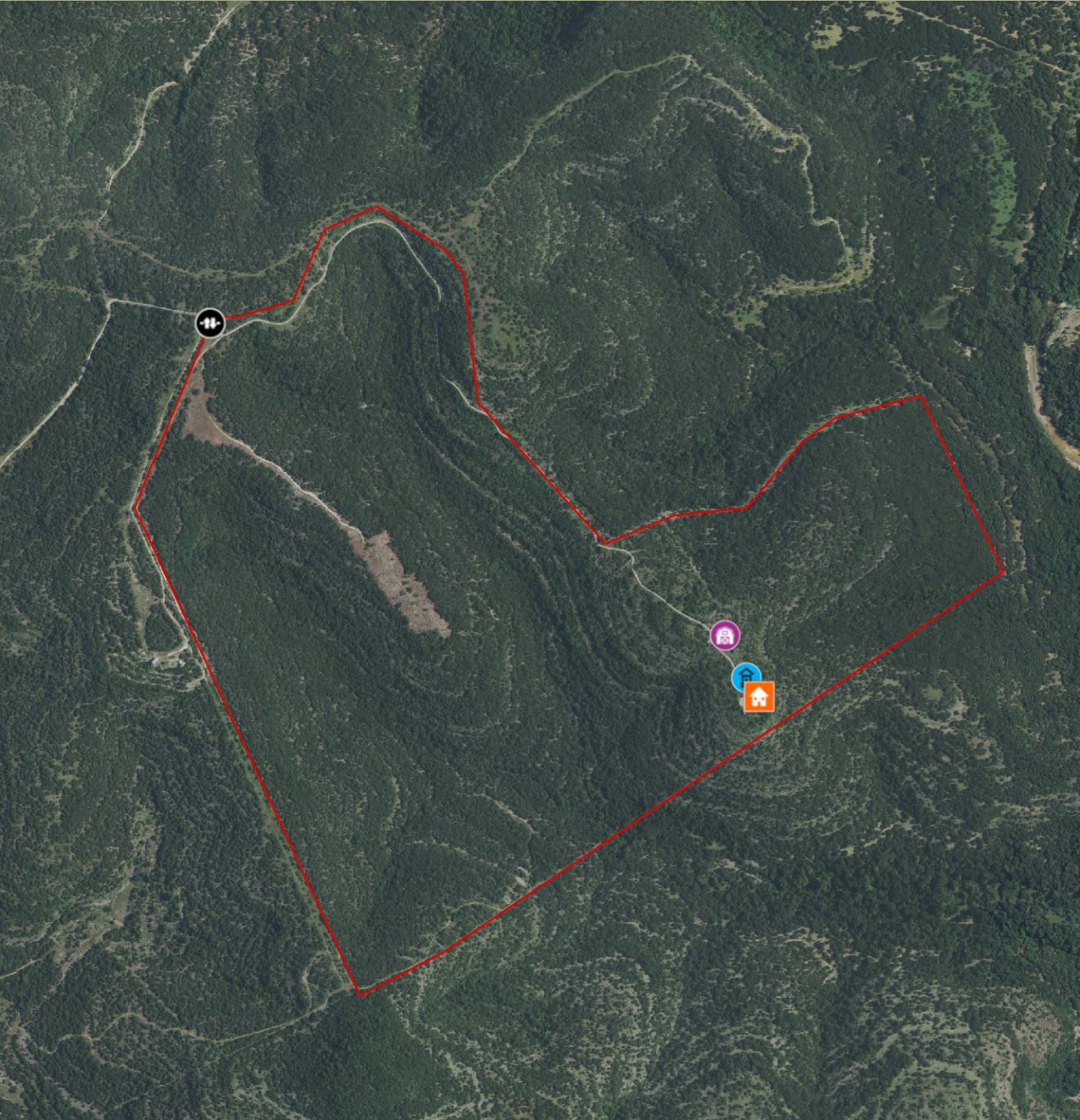


FEATURES:

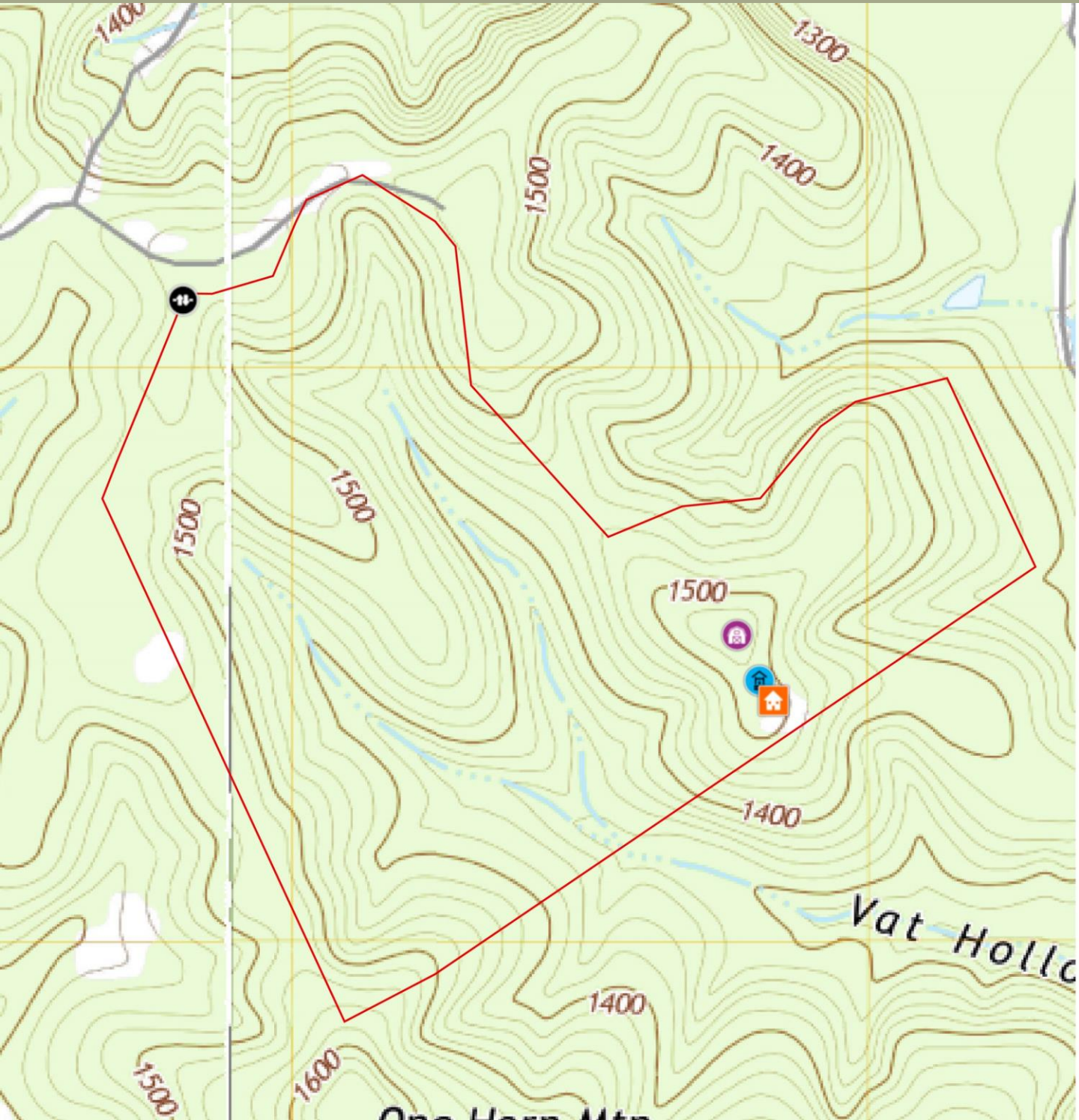
- Luxury custom rock home
- 3 Bedroom 2.5 Baths
- Fireplace
- Water well
- 2 HVAC units
- Metal barn
- Low fenced
- Ridge top views
- Wildlife Exemption
- End of the road privacy



283 ± Acres | Medina County



283 ± Acres | Medina County





Improvements on the ranch have been well designed to capture the beauty and spectacular views of the terrain. The custom rock home, with its open floor plan and covered porches is situated on a point overlooking the picturesque valley. The tastefully designed custom home consists of 3 bedrooms and 2.5 baths, large living room that is open to the kitchen, walk-in pantry, and a spacious utility room. Most of the rooms have doors that open to the back porch. Also located on the ranch is a large metal barn that has electricity, concrete flooring, and a roll up door. This ranch offers plenty of privacy, an abundance of wildlife, and the peaceful tranquility of country living.











