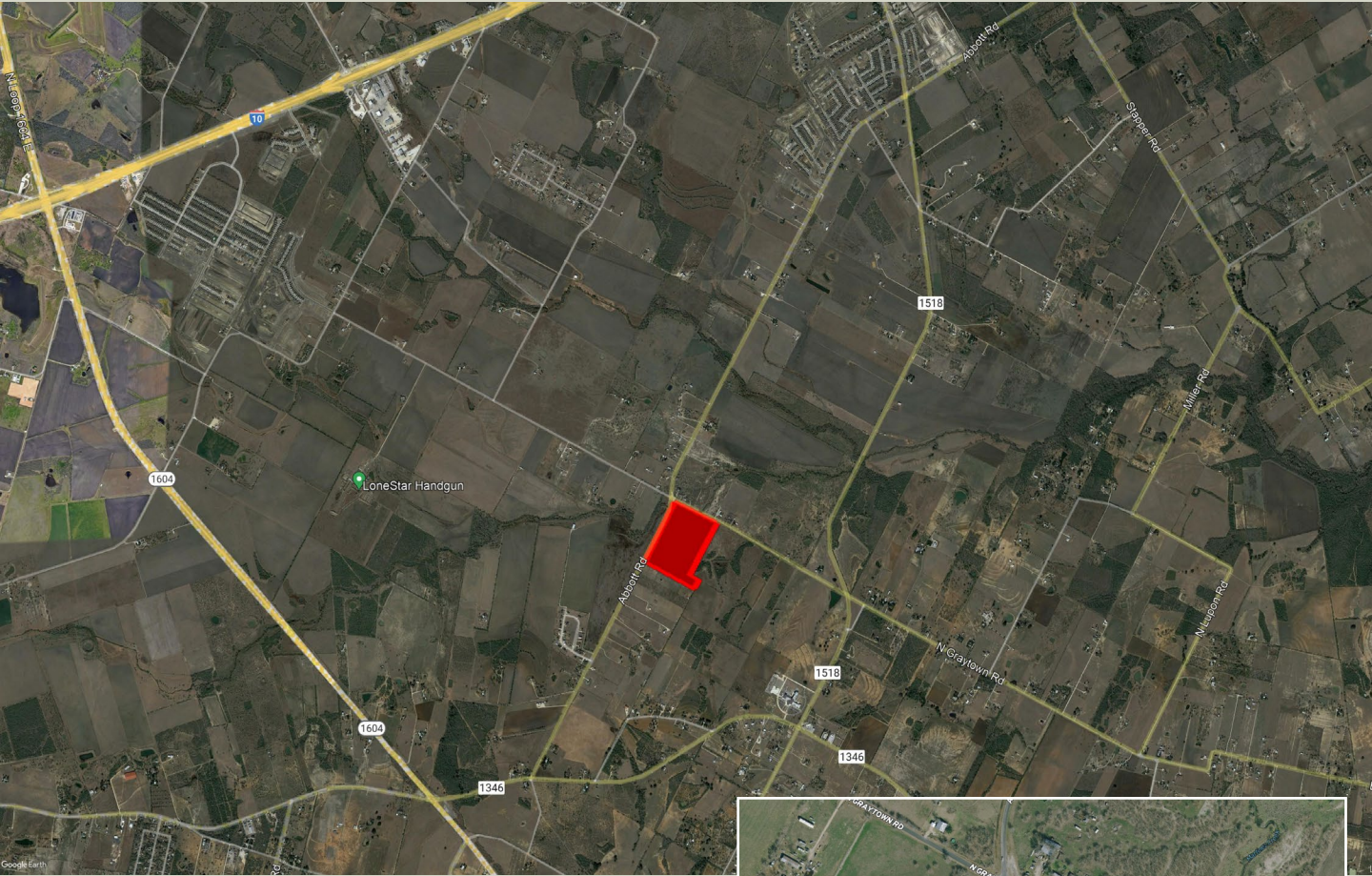




**J. Gruber Properties**  
*Representing the Best of Texas*



**FOR SALE**

**56 ± Acres, St. Hedwig, Texas**

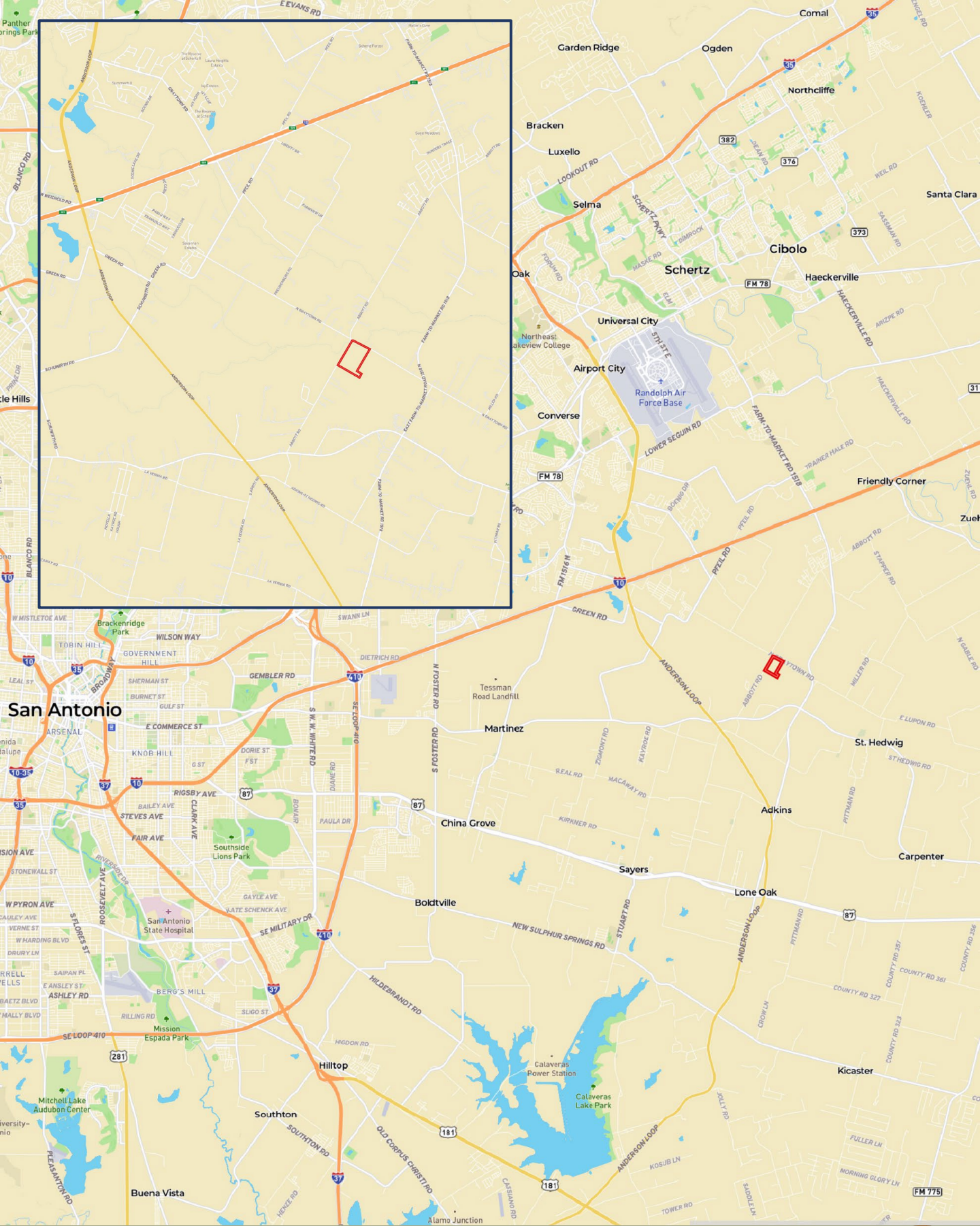
**PROPERTY FEATURES**

High Growth Area  
East Central ISD

Frontage on Abbott and N Graytown Rd





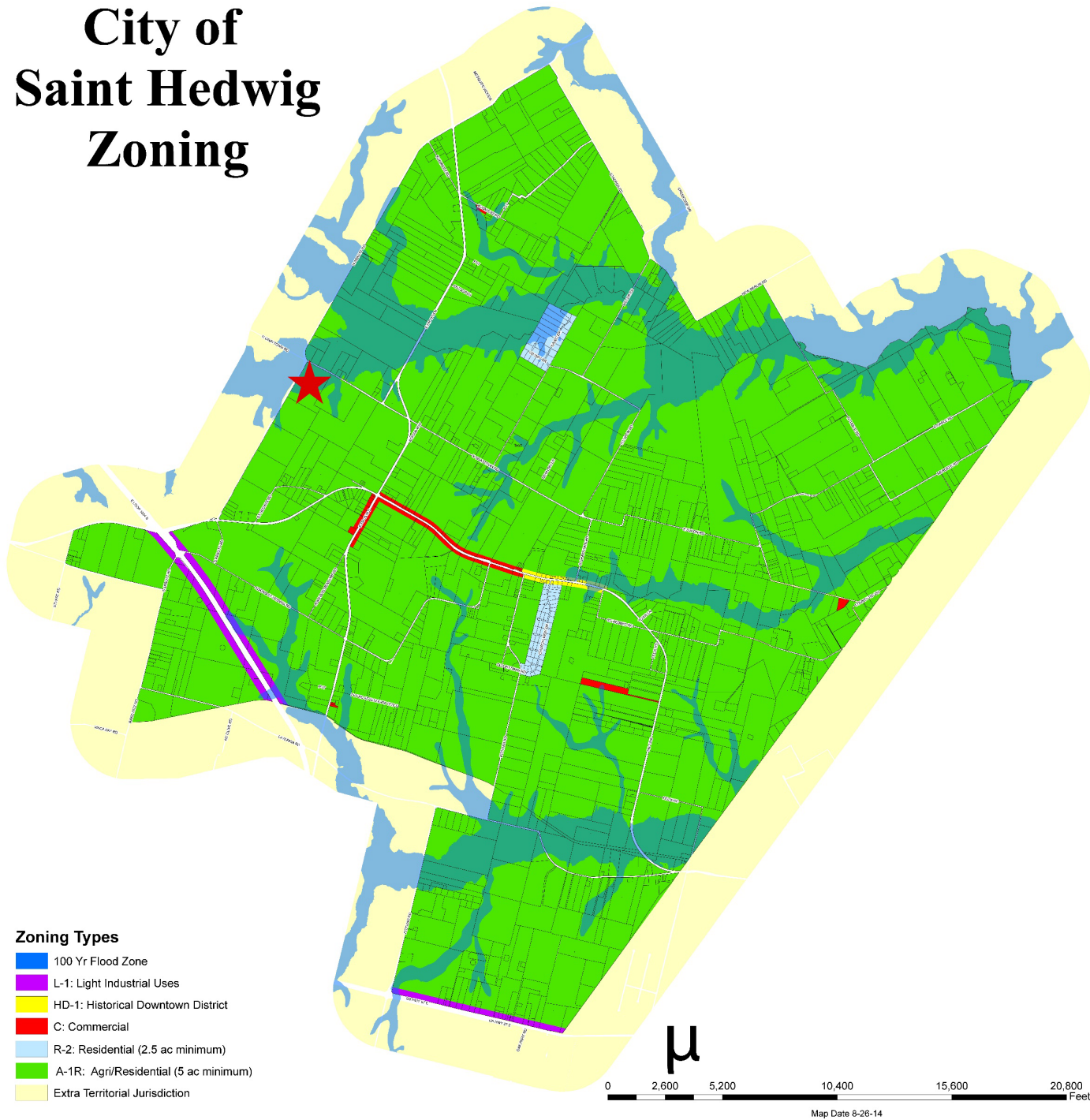


Street View





# City of Saint Hedwig Zoning



## PROPERTY FACTS

Price: \$2,100,000

Land Size: 56 ± acres

Road Frontage: Abbott and N Graytown Road

Parcel Number: 328782

Property use Description: Potential Development

St. Hedwig is located in one of the fastest growth areas of Bexar County. With easy access to San Antonio and the surrounding areas, great school districts, and over 1,800 feet of frontage on Abbott Rd and 1,200 feet of frontage on N Graytown Rd, makes the property an ideal investment. This beautiful 56 ± acres is mostly level with higher elevation towards the southeast corner.





Abbott Road



N Graytown Road







West



North

