



# GRUBER RANCH SALES

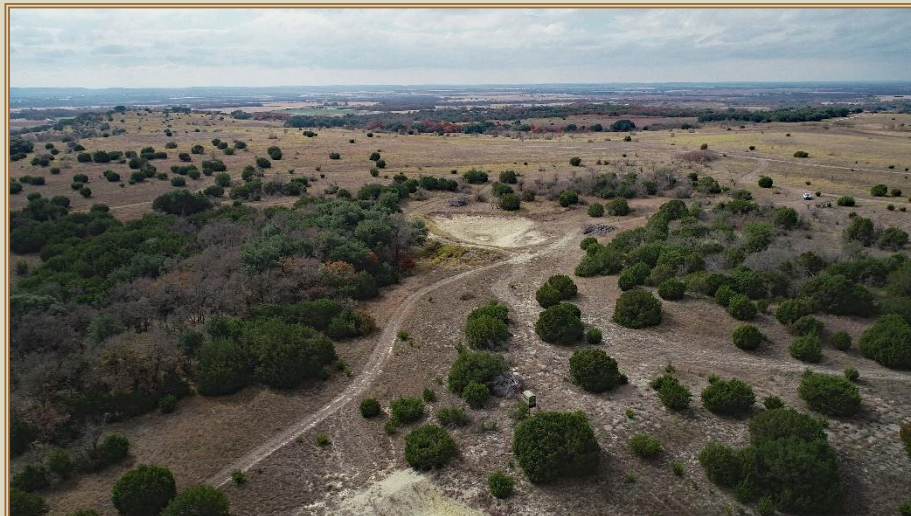
*Representing the Best of Texas*



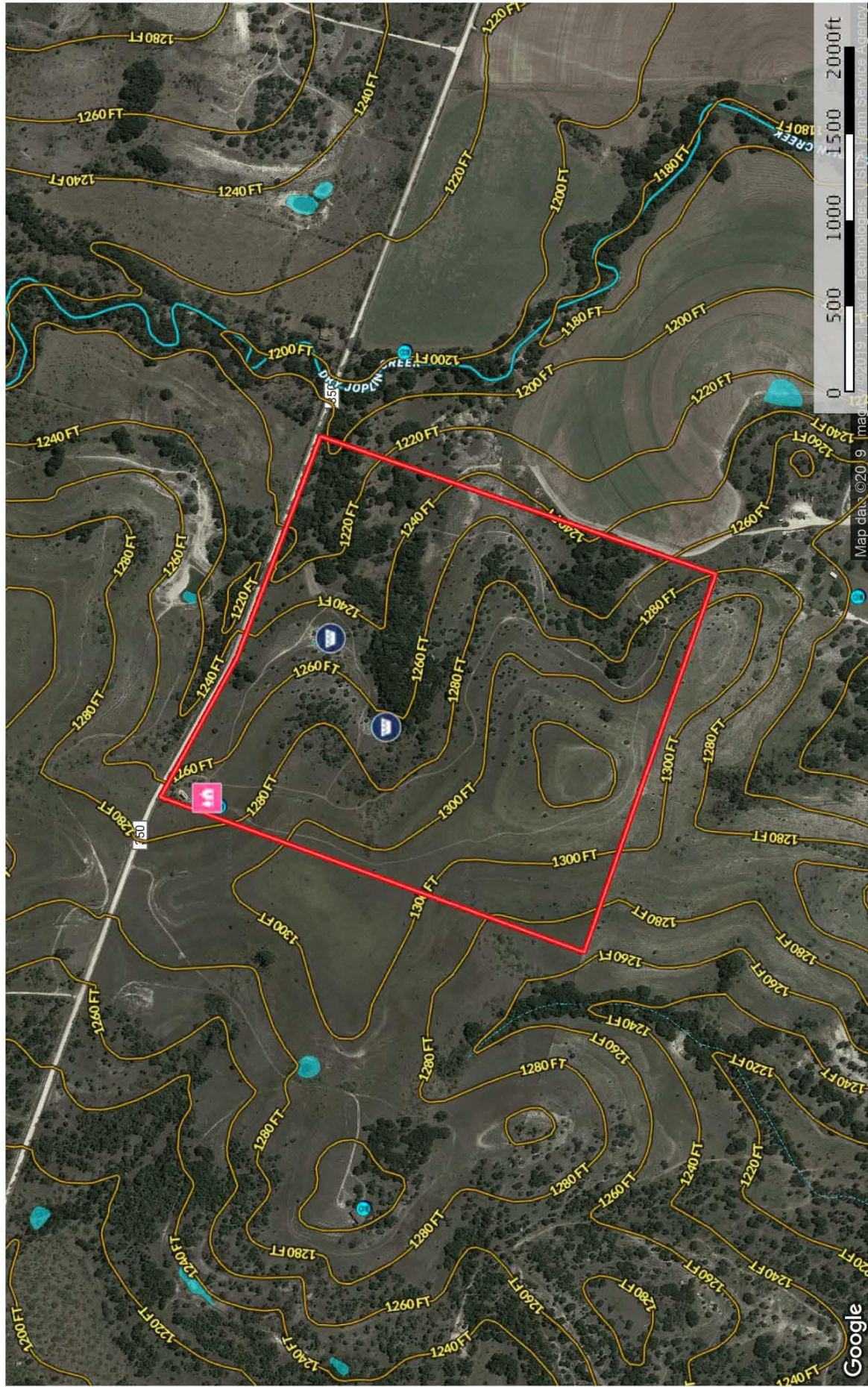
748 COUNTY ROAD 350  
DUBLIN, TX

94+- acre low fenced, turn key, hunting retreat located in Comanche County. Abundant wildlife is plentiful including whitetail deer, waterfowl, dove, turkey, hogs, among many other wildlife species. The property boasts a small cabin fitted with one bedroom and two lofts, a small bathroom, and kitchen. HVAC system inside helps ensure a comfortable night stay. Joslin Creek runs nearby along with two tanks that help provide water to native wildlife and livestock. The property is a short drive from Highway 377 making Fredericksburg, Dallas, Austin, and San Antonio quickly accessible. There are multiple shooting points and feeder positions on site, along with dense tree cover and multiple field food plots make this an ideal hunting location.

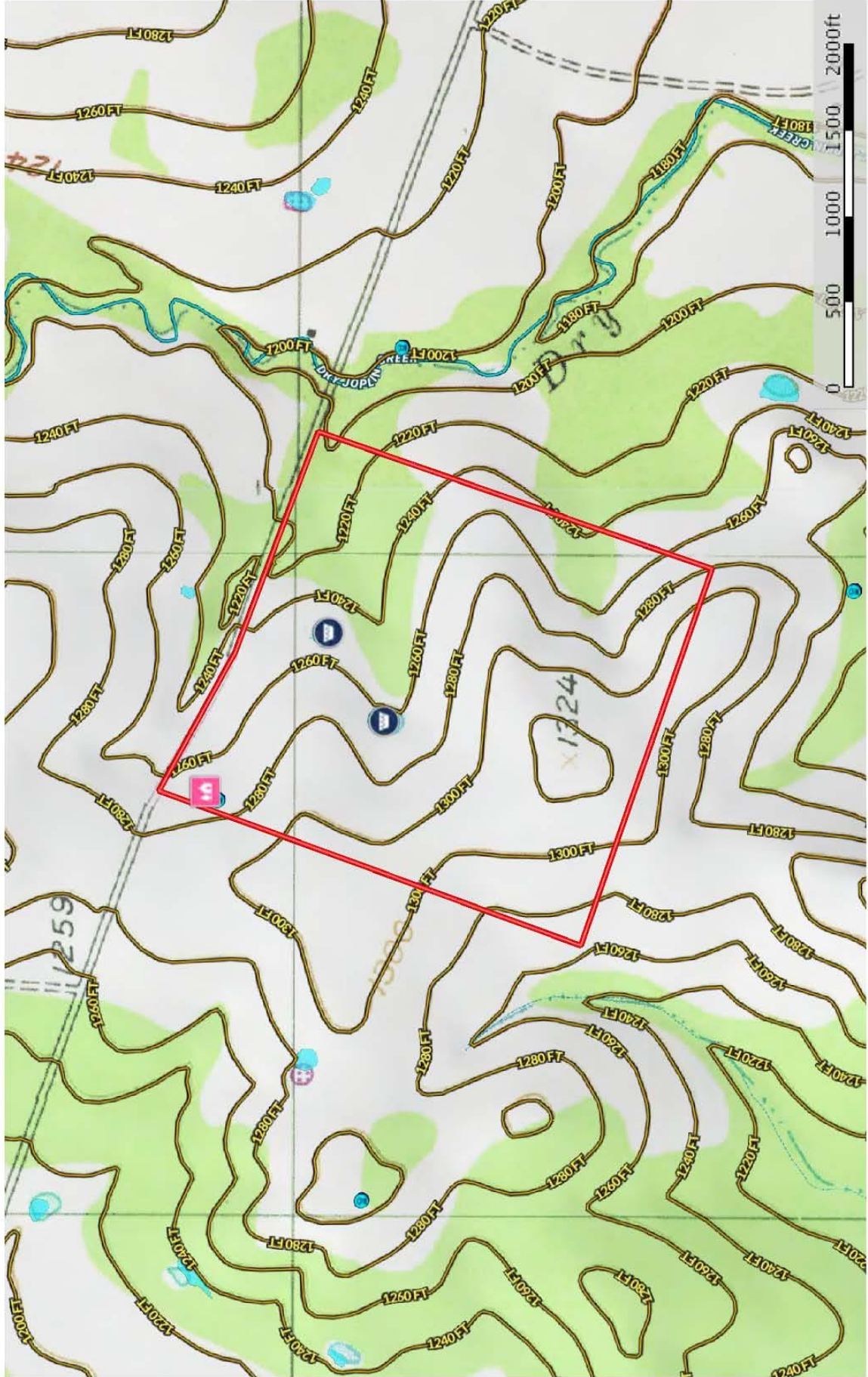
Please, call Taylor Carroll to schedule a showing. 830-822-7148



748 County Road 350 Dublin, Tx  
Comanche County, Texas, 94 AC +/-



748 County Road 350 Dublin, Tx  
Comanche County, Texas, 94 AC +/-



J. Gruber - Broker / Owner  
P: 830.426.5200 GruberRanches.com

515 20th Street / Honda, TX 78861



The information contained herein was obtained from sources other than Gruber Ranches. Gruber Ranches makes no warranties or guarantees as to the completeness or accuracy thereof.

# Representing the Best of Texas



*J. Gruber Properties and Gruber Ranch Sales*

515 20<sup>th</sup> Street, Hondo, Texas 78861 O: 830.426.5200 | F: 830.426.5206 | [info@jgruberproperties.com](mailto:info@jgruberproperties.com)