



J. Gruber Properties

Representing the Best of Texas

*39.55 Acres
Devine, Texas*

4
BEDROOMS

Welcome to this special 39-acre property, boasting rolling terrain and an abundance of majestic live oak trees. The perfect haven for nature lovers, outdoor enthusiasts, and those seeking a peaceful retreat from the hustle and bustle of city life.

2
FULL BATH

As you approach the property, you'll be struck by the picturesque views and the sense of tranquility that envelops the land. The landscape has towering live oak trees throughout and the rolling hills and valleys create a serene and private atmosphere, making it easy to imagine a life of seclusion and serenity.

2
HALF BATH

The estate's centerpiece is the 3,500 square foot fixer-upper home, boasting four spacious bedrooms, two full bathrooms, and two half bathrooms. With its classic architecture and sweeping porches, this property is ripe for renovation and customization to suit your unique tastes.

3,522±
SQUARE FEET

39.55 ±
ACRES

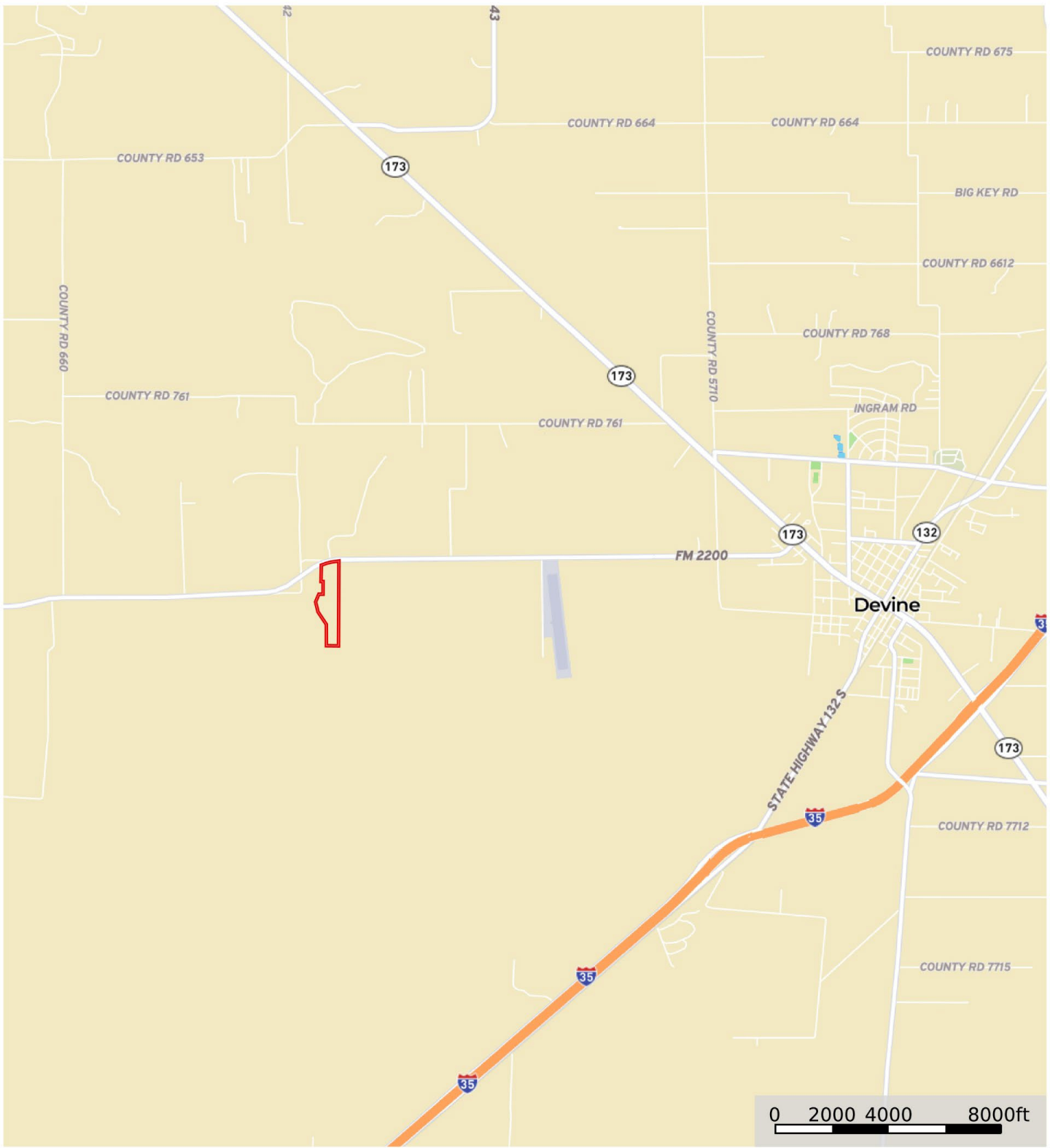
This is an opportunity to own a true gem, with endless possibilities for renovation, expansion, or simply enjoying the serenity of country living. Whether you're a nature lover, outdoor enthusiast, or simply looking for a peaceful retreat from the city, this property has something for everyone.

3
GARAGE

1
SWIMMING POOL

The information contained herein was obtained from sources believed to be reliable. Gruber Properties LLC and J. Gruber make no guarantees, warranties or representations as to the completeness or the accuracy. This presentation is submitted subject to errors, omissions, change of price or conditions, prior to lease or sale, or withdrawal without notice. The information is a work product of Gruber Properties, LLC and should not be used or distributed without permission

39.55 Johnson
Medina County, Texas, 39.55 AC +/-





- Gate
- Shed / Shack
- Water Storage Tank
- Main House
- Boundary









