



*515 20th Street
Hondo, Texas*



2
OFFICE ROOMS

1.5
BATHROOMS

1,100 ±
SQUARE FEET

.386 ±
ACRES

Located across from HEB, this 1940s house has been lovingly restored and updated to serve as a modern office space with a large covered parking area. The exterior of the house maintains its original charm with a classic facade and a welcoming front porch. Inside, the interior has been renovated to create a functional and stylish workspace.

The office features a spacious open floor plan with plenty of natural light streaming in through the large windows. The original hardwood floors have been refinished and the walls painted in a fresh, neutral color palette. Modern furnishings and fixtures add a touch of contemporary flair to the space, while still respecting the historical integrity of the home.

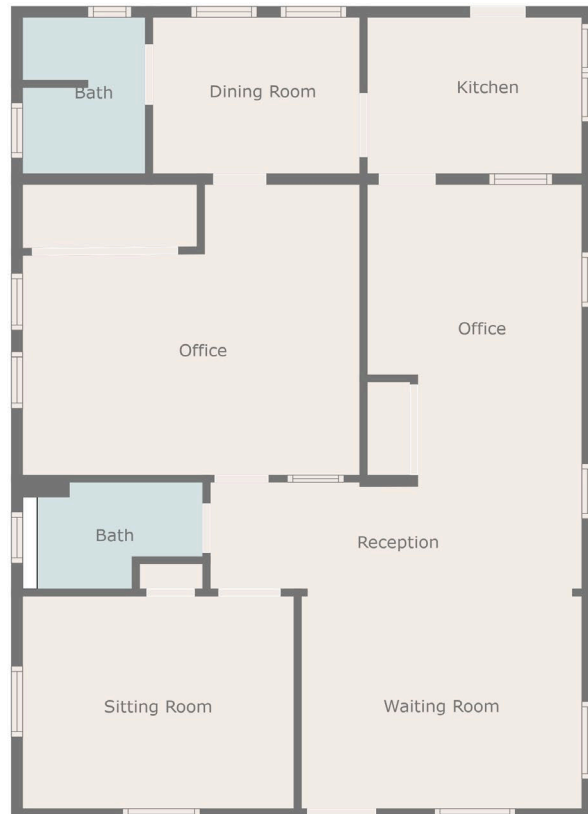
One of the standout features of the office is the expansive covered parking area that has been added to the property. This addition provides ample space for employees and clients to park their cars safely and out of the elements.

Overall, the 1940s house turned office with a large covered parking area is a unique and inviting space that combines the character of the past with the functionality of the present.









The information contained herein was obtained from sources believed to be reliable. Gruber Properties LLC and J. Gruber make no guarantees, warranties or representations as to the completeness or the accuracy. This presentation is submitted subject to errors, omissions, change of price or conditions, prior to lease or sale, or withdrawal without notice. The information is a work product of Gruber Properties, LLC and should not be used or distributed without permission.