

# 7 ± Acres

Hwy 173 N | Devine, TX | Medina County



Gruber Ranch Sales

*Representing the Best of Texas*

830.426.5200 jcg@gruberranches.com







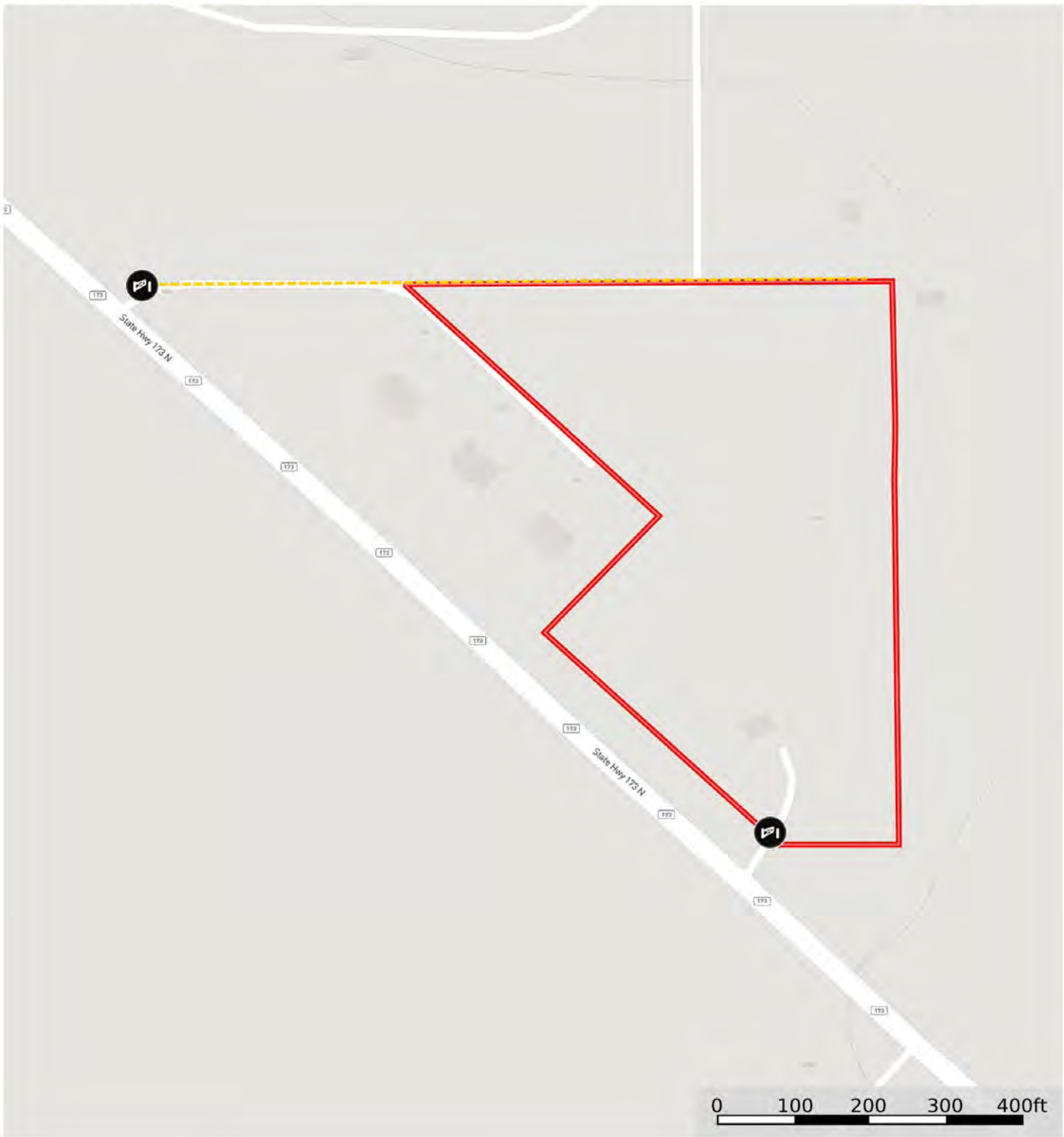
This attractive 7 +/- acres is located on Highway 173, approximately 15 miles from Hondo and 7 miles from Devine. Access to the property is from Highway 173 and a private road that leads to the northern boundary. There is a Medina Electric meter and one East Medina water meter on the property, with the potential to add additional water meters. The landscape features a pond and several large trees, which not only enhance aesthetic appeal but also provide shade and natural beauty. With its prime location, accessible utilities, and pleasant surroundings, this property is ready for you to make it your own.







Gate      Road / Trail      Boundary



 Gate  Road / Trail  Boundary











