

Leinweber Ranch

195 ± Acres | Hondo, TX | Medina County

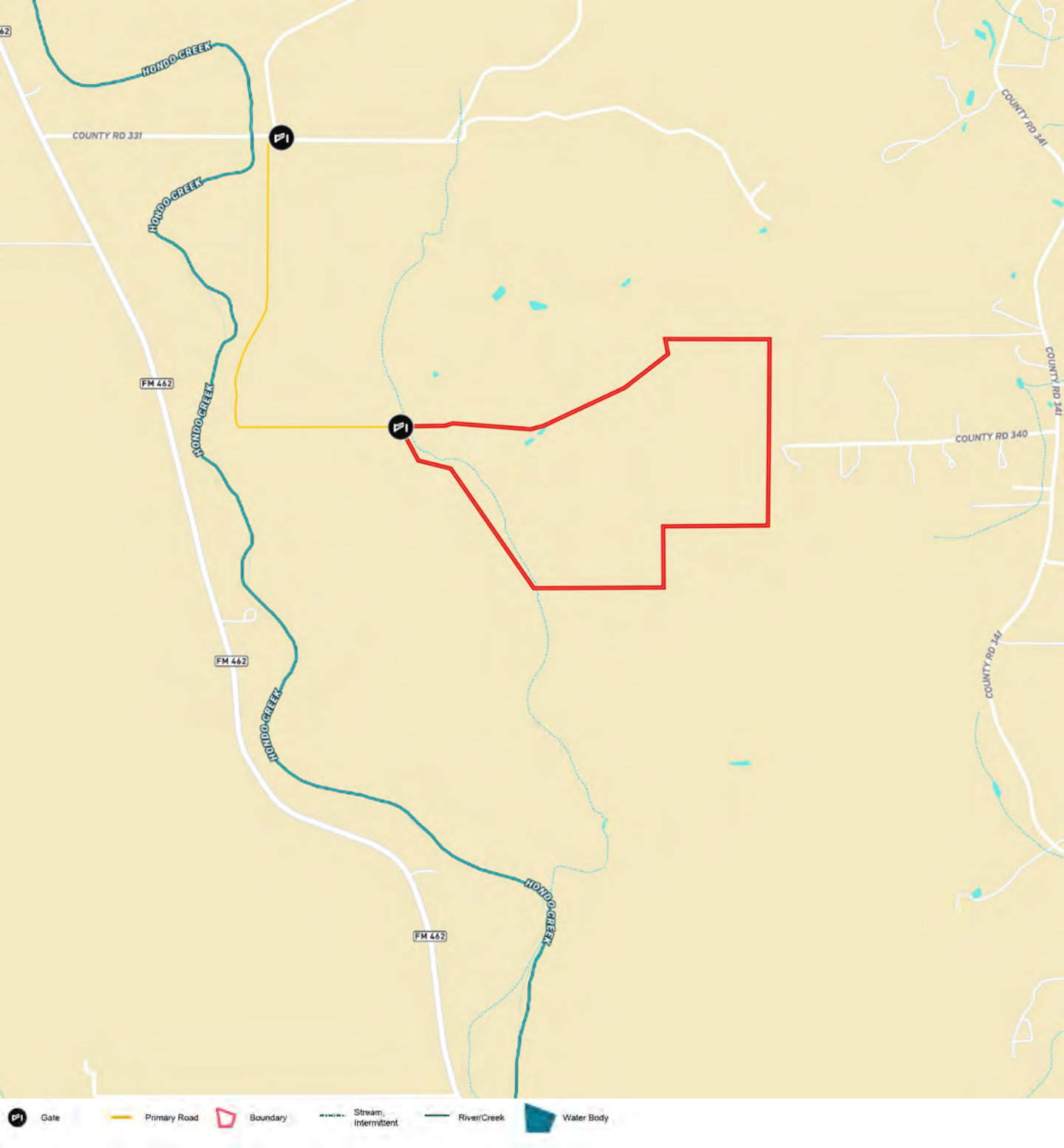


Gruber Ranch Sales

Representing the Best of Texas

830.426.5200 jcg@gruberranches.com

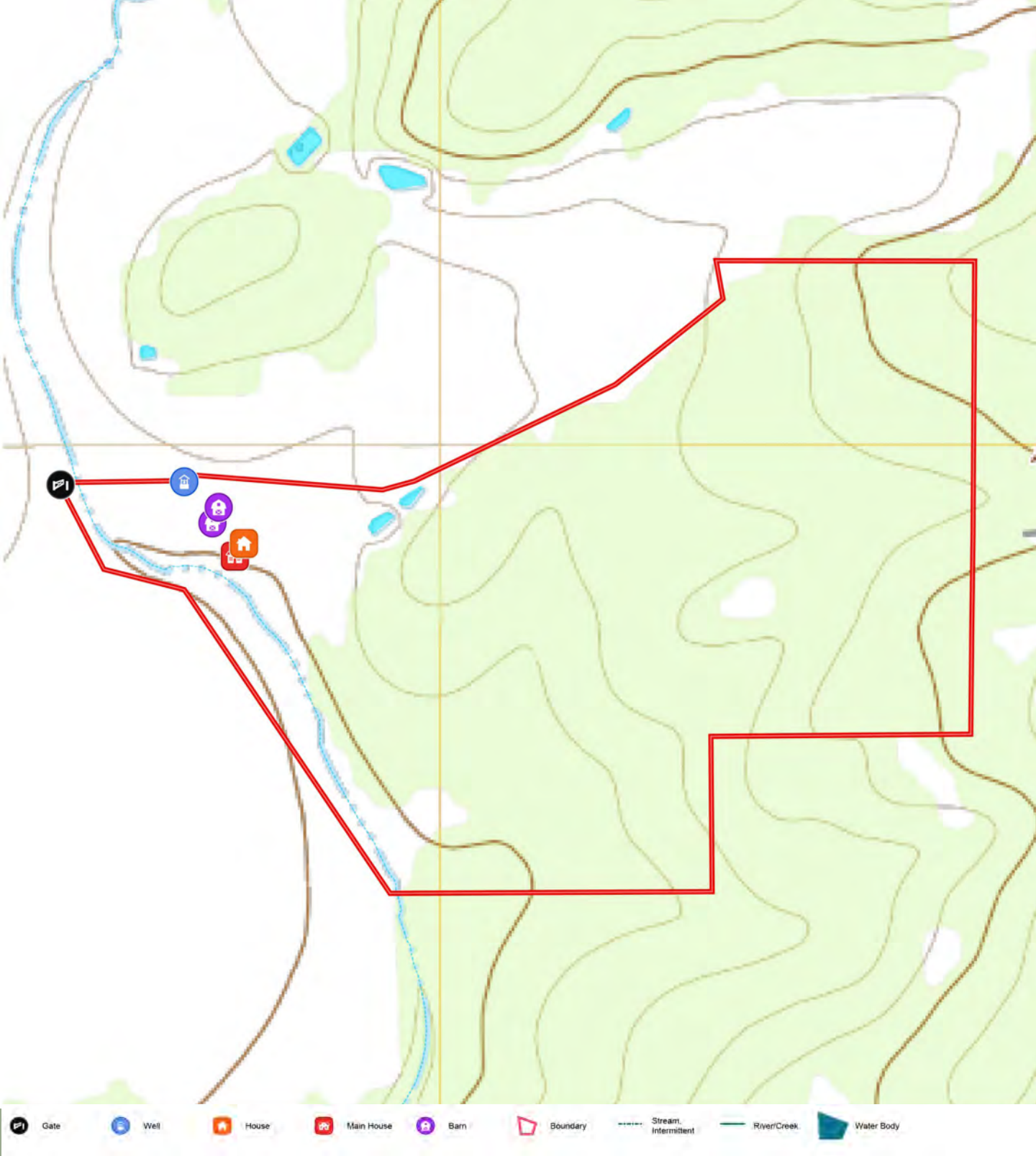




This 195-acre ranch is situated in the scenic transition zone of Medina County, approximately 11 miles north of Hondo and 18 miles south of Tarpley. The property strikes a perfect balance between seclusion and accessibility, offering a peaceful retreat while still being close to essential amenities in nearby towns. The land features a combination of open fields and primarily brush, providing both grazing opportunities and natural cover for wildlife. This diverse landscape creates an ideal environment for ranching, farming, and hunting.



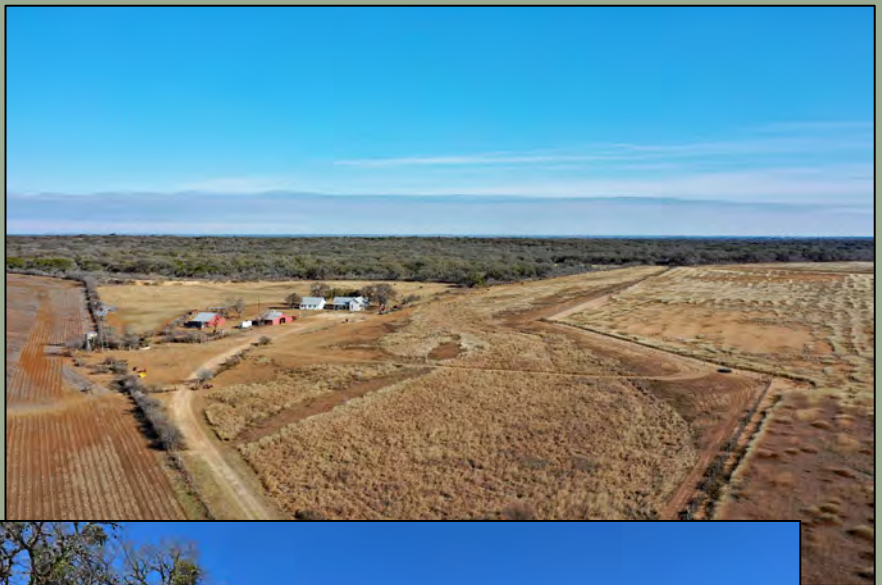
A reliable water well supplies fresh water to the ranch house and water troughs, ensuring consistent access for both the home and livestock. Additionally, a stock tank offers another water source, making it ideal for livestock and recreational use. The property features an older ranch house that exudes rustic charm and presents opportunities for restoration or renovation. Whether you choose to restore the house to its original character or rebuild, it provides a solid foundation for your future plans.



This 195-acre ranch in Medina County offers a unique combination of natural beauty, seclusion, and potential. The versatile land is perfect for various uses, including ranching, farming, hunting, and recreational activities. Whether you're seeking a peaceful rural retreat or a working ranch, this property presents endless opportunities.

FEATURES:

- 195 ± Acres
- End of the road Privacy
- 2 Barns
- 1 Water well
- Improved pastures
- Stock tank
- Cattle pens
- Older Ranch House

















195 ± Acres | Hondo, TX | Medina County



J. Gruber – Broker – jcg@gruberranches.com – 830-426-5200

