

Saathoff Ranch

108 ± Acres | Hondo, TX | Medina County

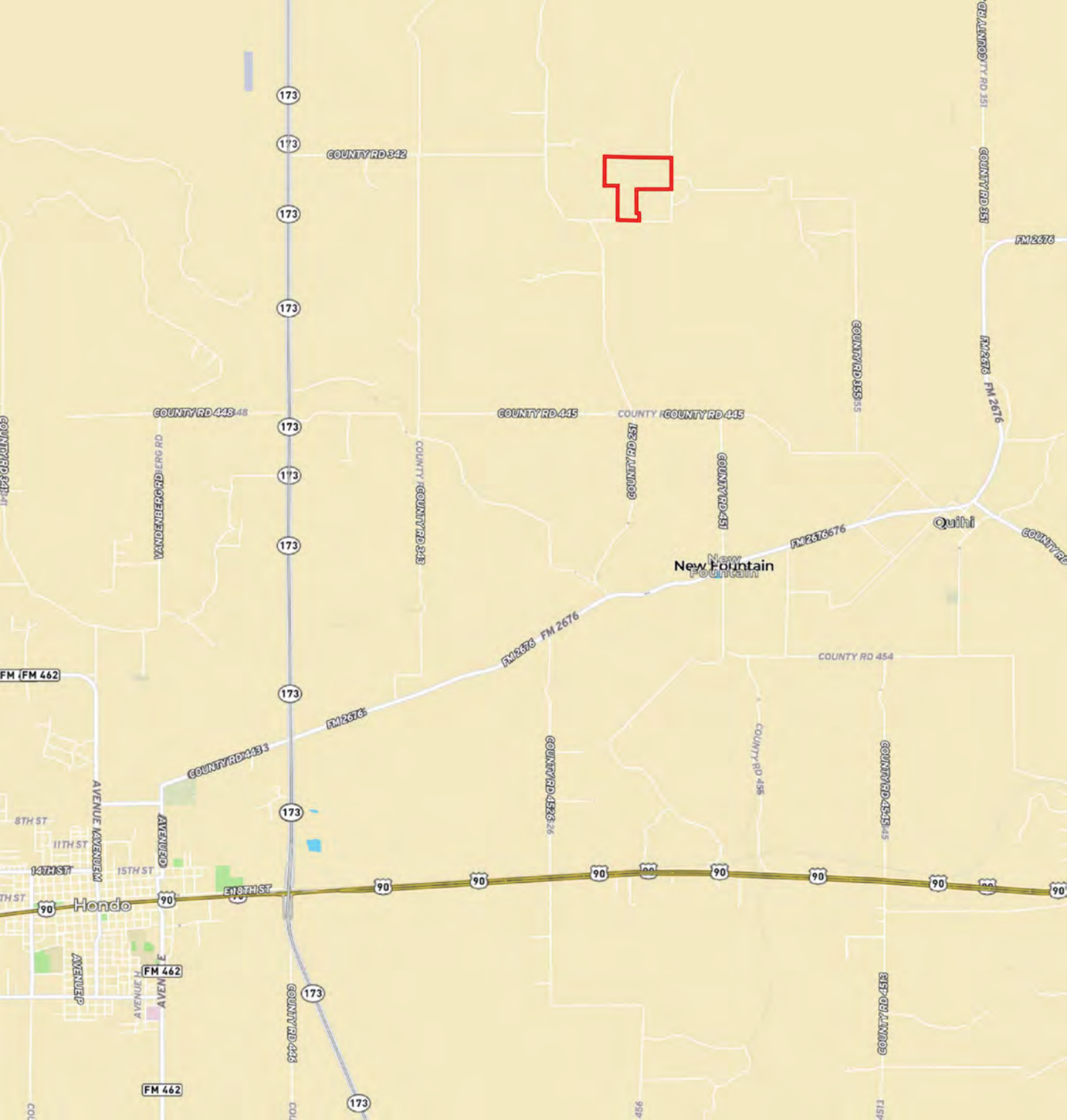


Gruber Ranch Sales

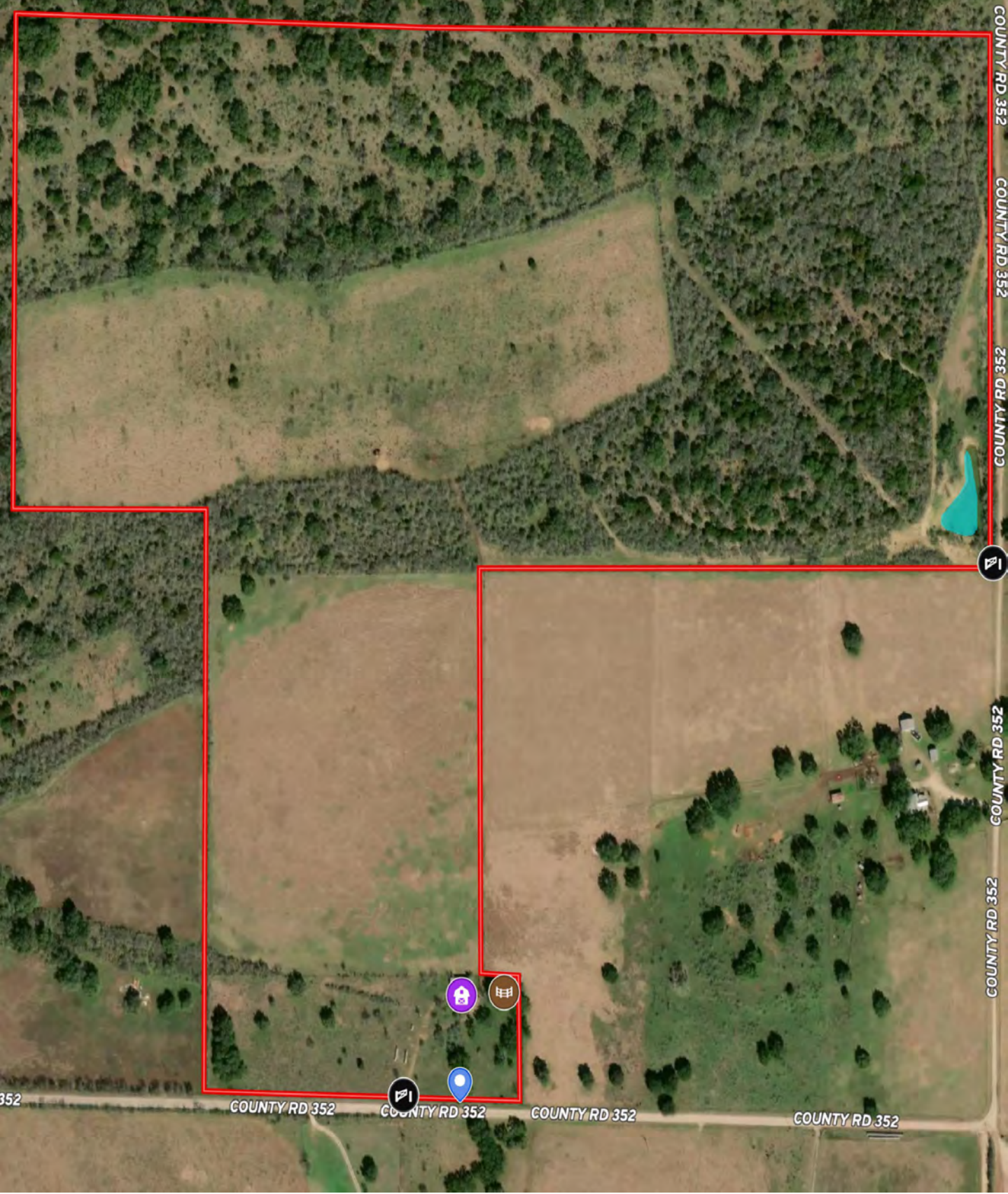
Representing the Best of Texas

830.426.5200 | jcg@gruberranches.com



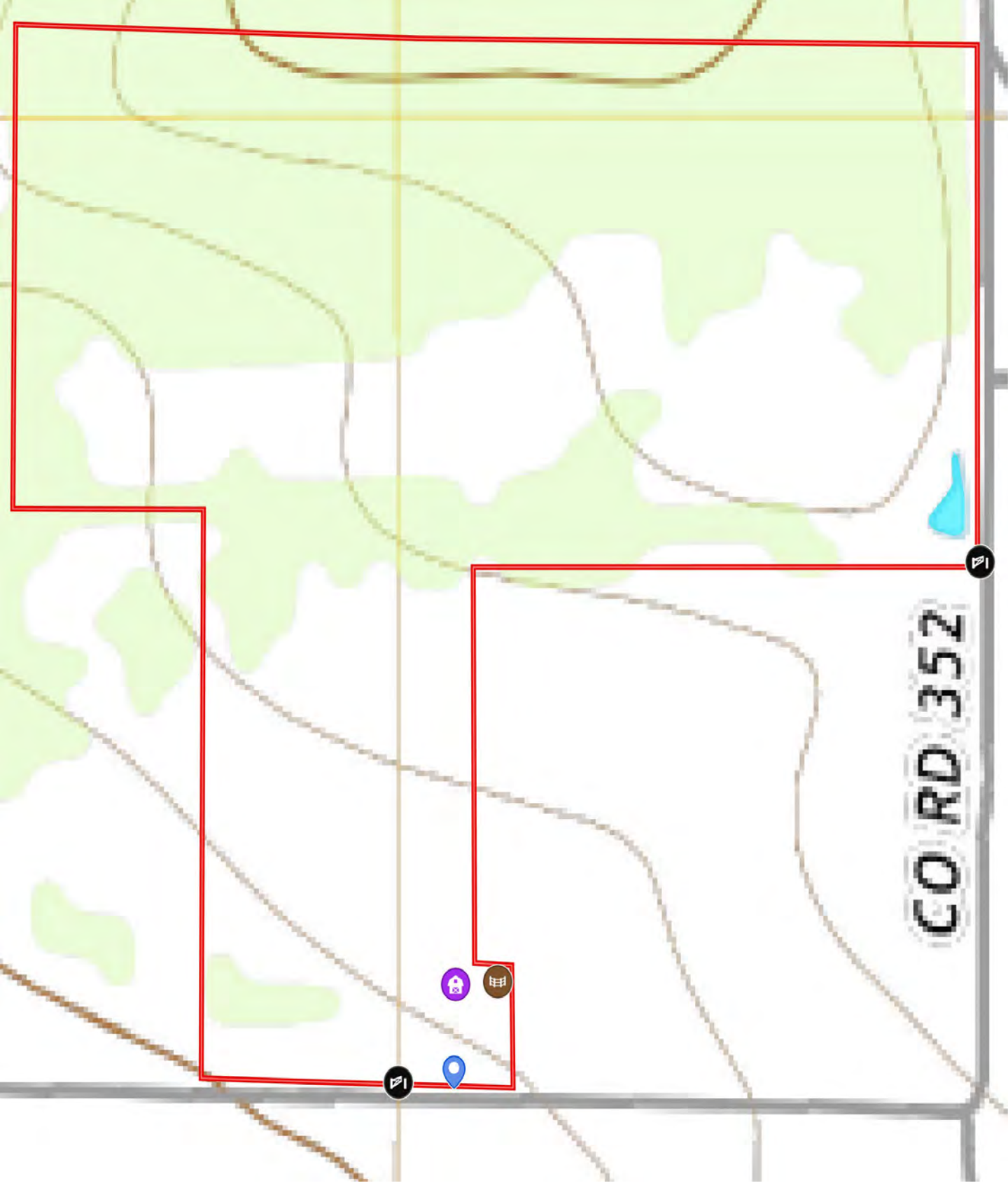


This 108-acre ranch is situated just north of Hondo, Texas, with frontage on County Road 352. The property features a picturesque landscape, highlighted by majestic live oak trees that offer plenty of shade and create a serene atmosphere. The land features a combination of healthy brush and open fields, making it perfect for various agricultural and recreational activities. The property enjoys easy access to nearby amenities while providing a peaceful, rural retreat. It's an ideal location for those seeking a private ranch or a weekend getaway, with convenient proximity to the town of Hondo and major highways.



- Pens
- Barn
- Gate
- Water Meter
- Boundary
- Stream Intermittent
- River/Creek
- Water Body





-  Pens
-  Barn
-  Gate
-  Water Meter
-  Boundary
-  Stream, Intermittent
-  River/Creek
-  Water Body



FEATURES:

- CR 352 frontage
- Stock tank
- Water meter
- Cattle pens
- Pole barn
- Improved pastures











