



GRUBER RANCH SALES

Representing the Best of Texas

Circle D Ranch



Circle D Ranch is located north of D'Hanis off FM 1796 and approximately 4 miles down PR 3213 situated in the transition zone of Medina County. The terrain on the ranch is gently rolling with deep soils in areas and higher elevations in others. Majority of the ranch is all native with thick grasses and brush and is covered with live oaks, mesquites, and some cedar.

Water on the ranch consists of two water wells strategically placed throughout the property. One well is equipped with a submersible pump and supplies water to the camp house and cattle pens. The other well is equipped with a windmill and services a water trough. There is a wet-weather drainage that runs through the middle of the property that creates a nice pond.

Some of the improvements on the ranch include a small hunting cabin with separate sleeping shack and storage buildings. The entire ranch is low fenced with the exception of the west boundary which is high fenced. Wildlife in the area consists of variety of species such as axis whitetail deer, quail, turkey, and hogs.

This is a beautiful low fenced recreational/hunting ranch with end of the road privacy. The ranch lies within the current Texas Parks and Wildlife CWD Zone.

FEATURES:

- 352 +/- Acres
- Price: \$1,319,475
- Hunting cabin
- 2 water wells
- Electricity
- Pond
- Small set of pens
- Low fenced
- Hill Country views
- End-of-the-road-privacy



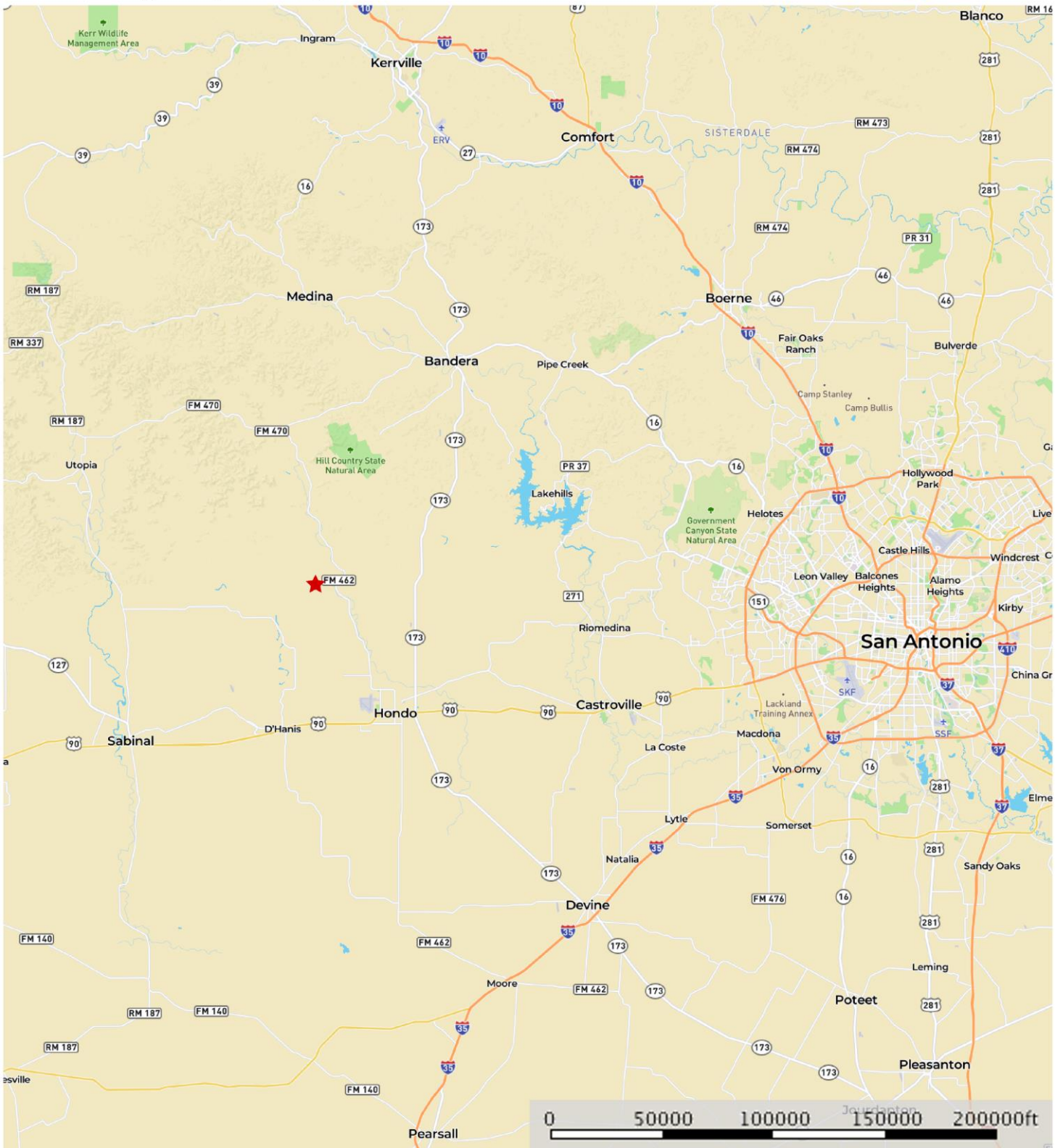






Circle D Ranch

Medina County, Texas, 352 AC +/-



★ Location

J. Gruber - Broker / Owner

P: 830.426.5200

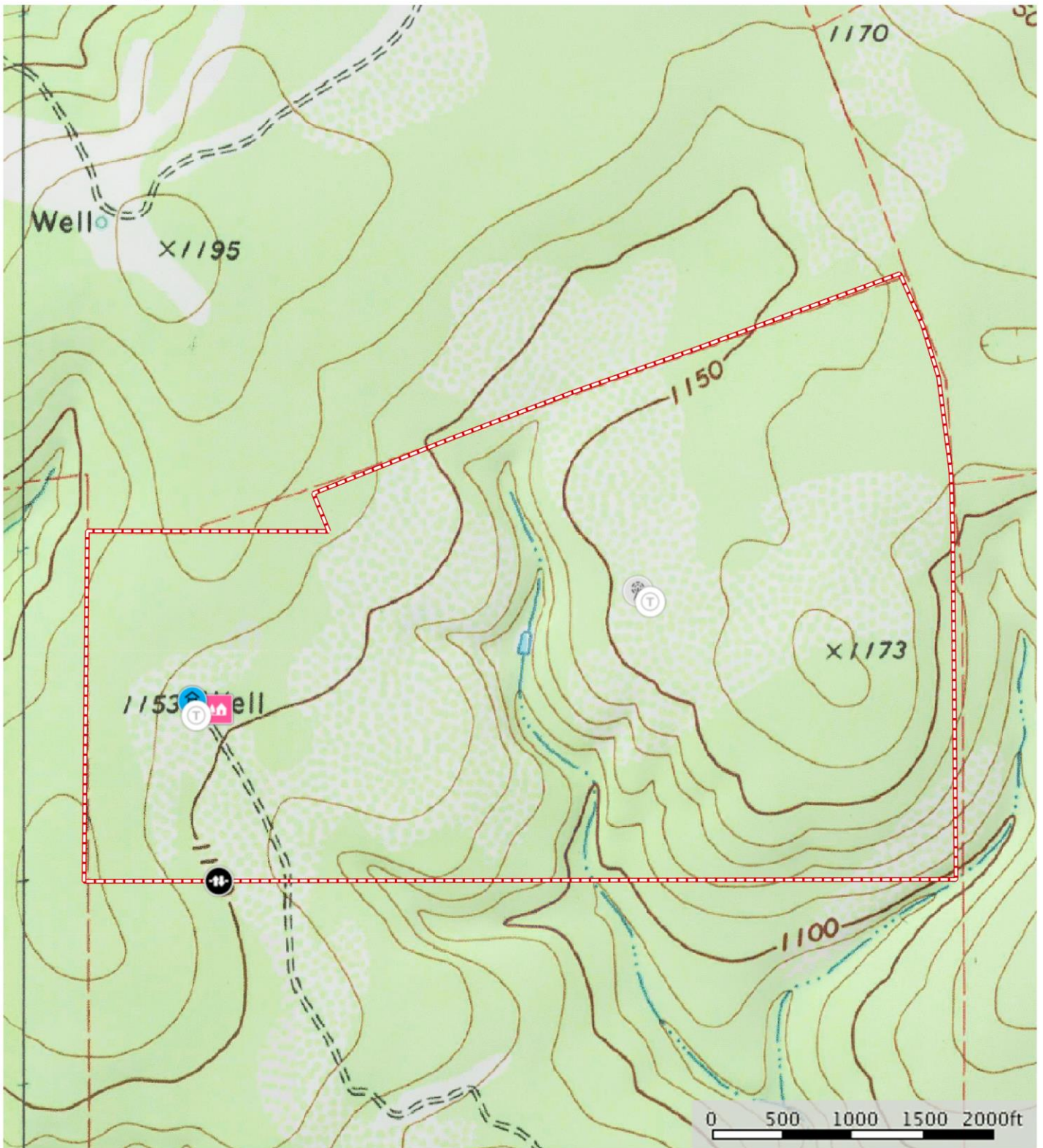
GruberRanches.com

515 20th Street / Hondo, TX 78861



The information contained herein was obtained from sources deemed to be reliable. MapRight Services makes no warranties or guarantees as to the completeness or accuracy thereof.

Circle D Ranch
Medina County, Texas, 352 AC +/-

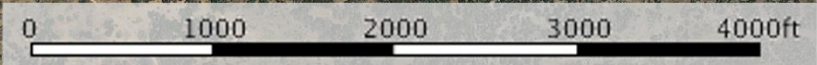
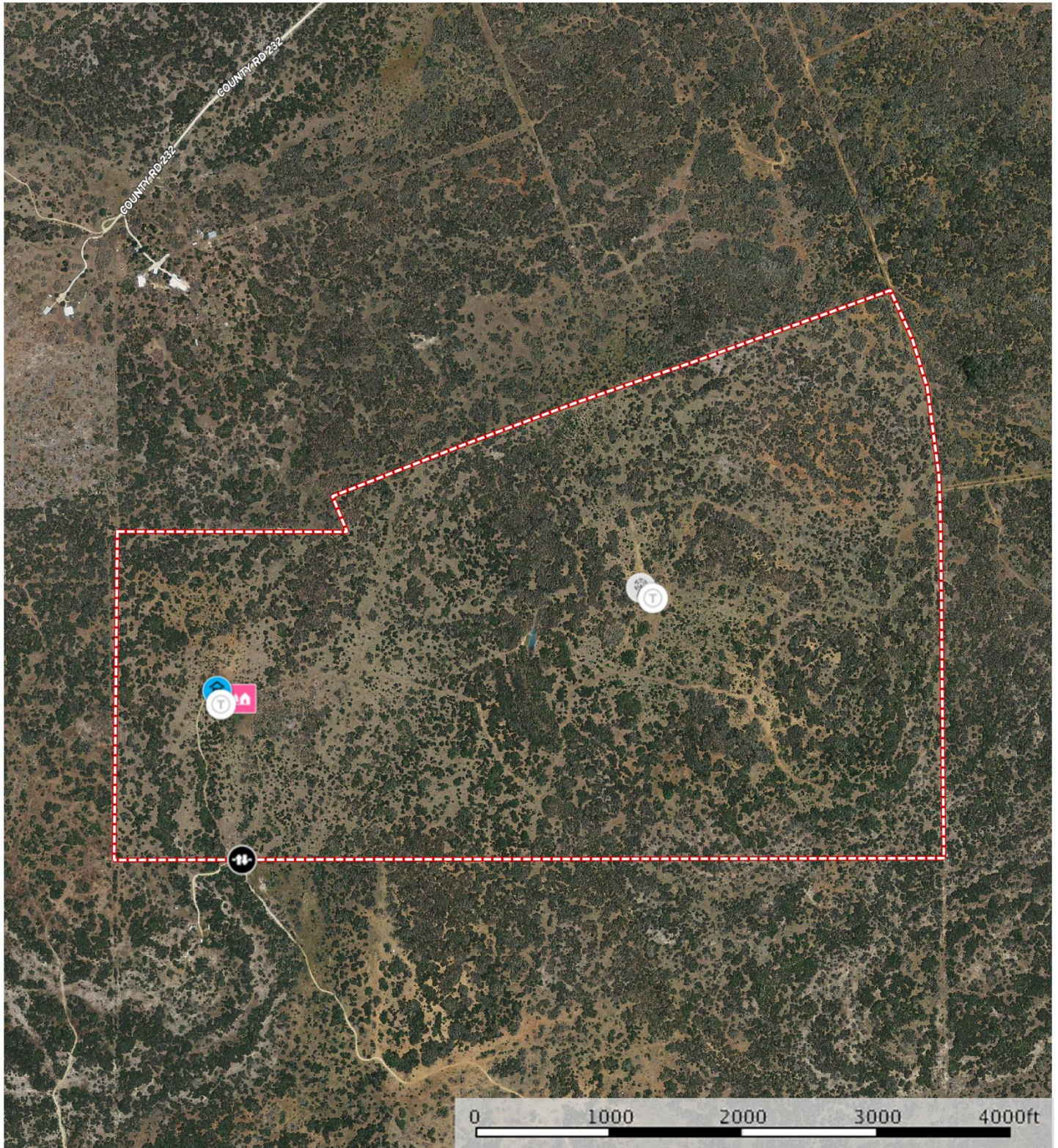


- Trough
- Gate
- Well
- Cabin
- Windmill
- Pond / Tank
- Boundary

J. Gruber - Broker / Owner
P: 830.426.5200 GruberRanches.com 515 20th Street / Hondo, TX 78861

The information contained herein was obtained from sources deemed to be reliable. MapRight Services makes no warranties or guarantees as to the completeness or accuracy thereof.

Circle D Ranch
Medina County, Texas, 352 AC +/-



- Trough
- Gate
- Well
- Cabin
- Windmill
- Pond / Tank
- Boundary

J. Gruber - Broker / Owner
P: 830.426.5200 GruberRanches.com 515 20th Street / Hondo, TX 78861

The information contained herein was obtained from sources deemed to be reliable. MapRight Services makes no warranties or guarantees as to the completeness or accuracy thereof.

Representing the Best of Texas



J. Gruber Properties and Gruber Ranch Sales

515 20th Street, Hondo, Texas 78861 O: 830.426.5200 | F: 830.426.5206 | info@jgruberproperties.com