



GRUBER RANCH SALES

Representing the Best of Texas



FASLER FARM

201+/- ACRES
MEDINA COUNTY

We are pleased to offer this 201-acre irrigated farm, which is located directly outside of the city-limits of Hondo, Texas.

Located in Medina County, this property has frontage on FM 462, as well as County Road 341. An older 2,500 square-foot homestead is situated centrally on the property and is shaded by large oaks and pecan trees. Additionally, there are also several barns and grain bins on the farm.

This farm has approximately 165 irrigated acres, being watered by center-pivot, drip-irrigation, and flood. The water is supplied by a high-producing Edward's aquifer well and the farm will convey with 116.8 acre/ft. of base water-rights. There are additional water-rights available for purchase in association with the purchase of this property.

This property is highly productive, while offering great investment or end-user potential for the scrupulous buyer.

Please, call Jody Jacobs to schedule a showing. 210-827-7180



Faseler Family Properties
Medina County, Texas, 201 AC +/-



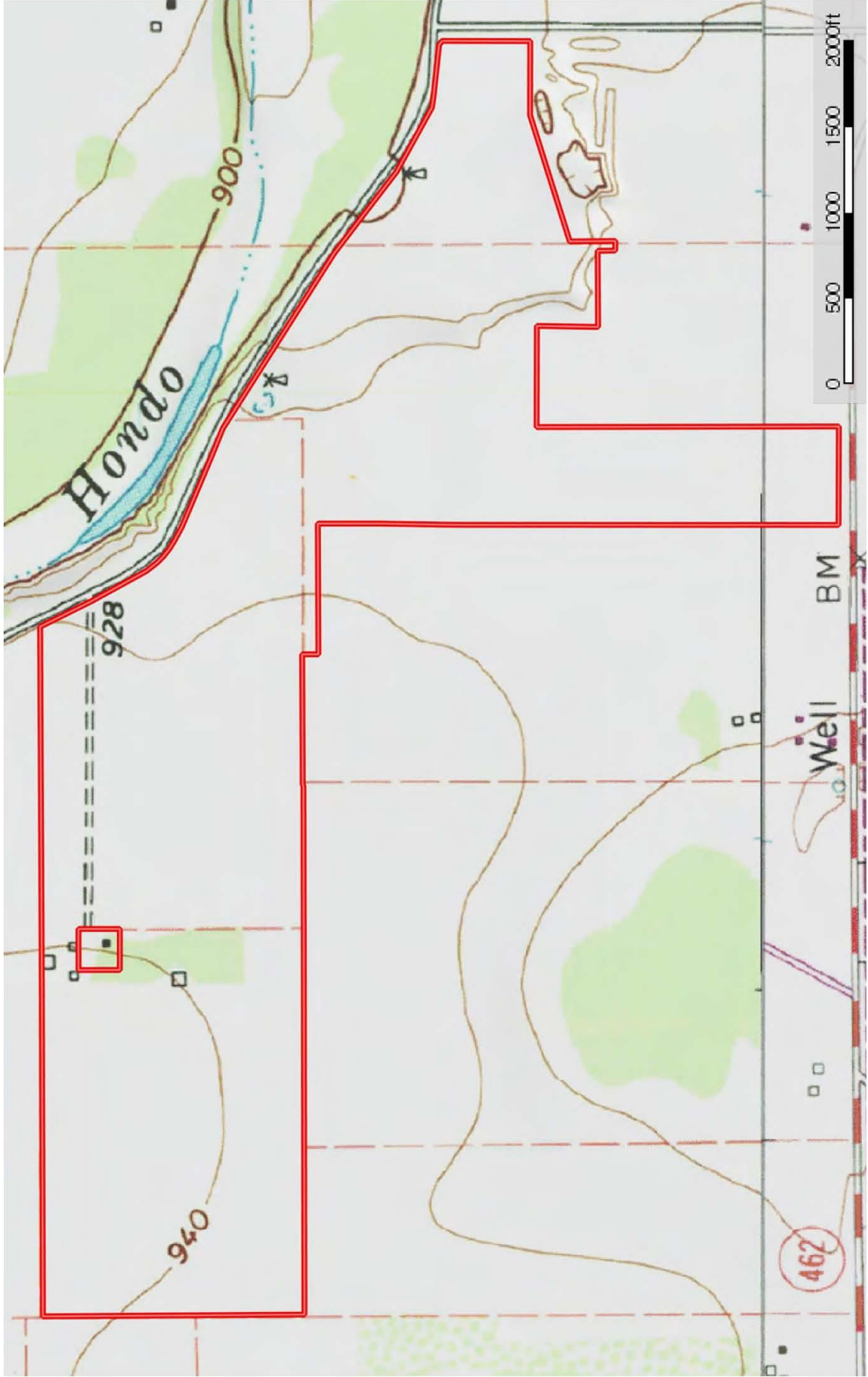
 Boundary

Jody Jacobs
P: 210-827-7180 jj@jgruberproperties.com



The information contained herein was obtained from sources deemed to be reliable. MapRight Services makes no warranties or guarantees as to the completeness or accuracy thereof.

Fasler Family Properties
Medina County, Texas, 201 AC +/-



Boundary

Jody Jacobs
P: 210-827-7180
jjc@jgruberproperties.com



The information contained herein was obtained from sources deemed to be reliable. JGRUBER PROPERTIES makes no warranties or guarantees as to the completeness or accuracy thereof.

Representing the Best of Texas



J. Gruber Properties and Gruber Ranch Sales

515 20th Street, Hondo, Texas 78861 O: 830.426.5200 | F: 830.426.5206 | info@jgruberproperties.com