



GRUBER RANCH SALES

Representing the Best of Texas



FLOERKE FARM

104+/- ACRES
MEDINA COUNTY

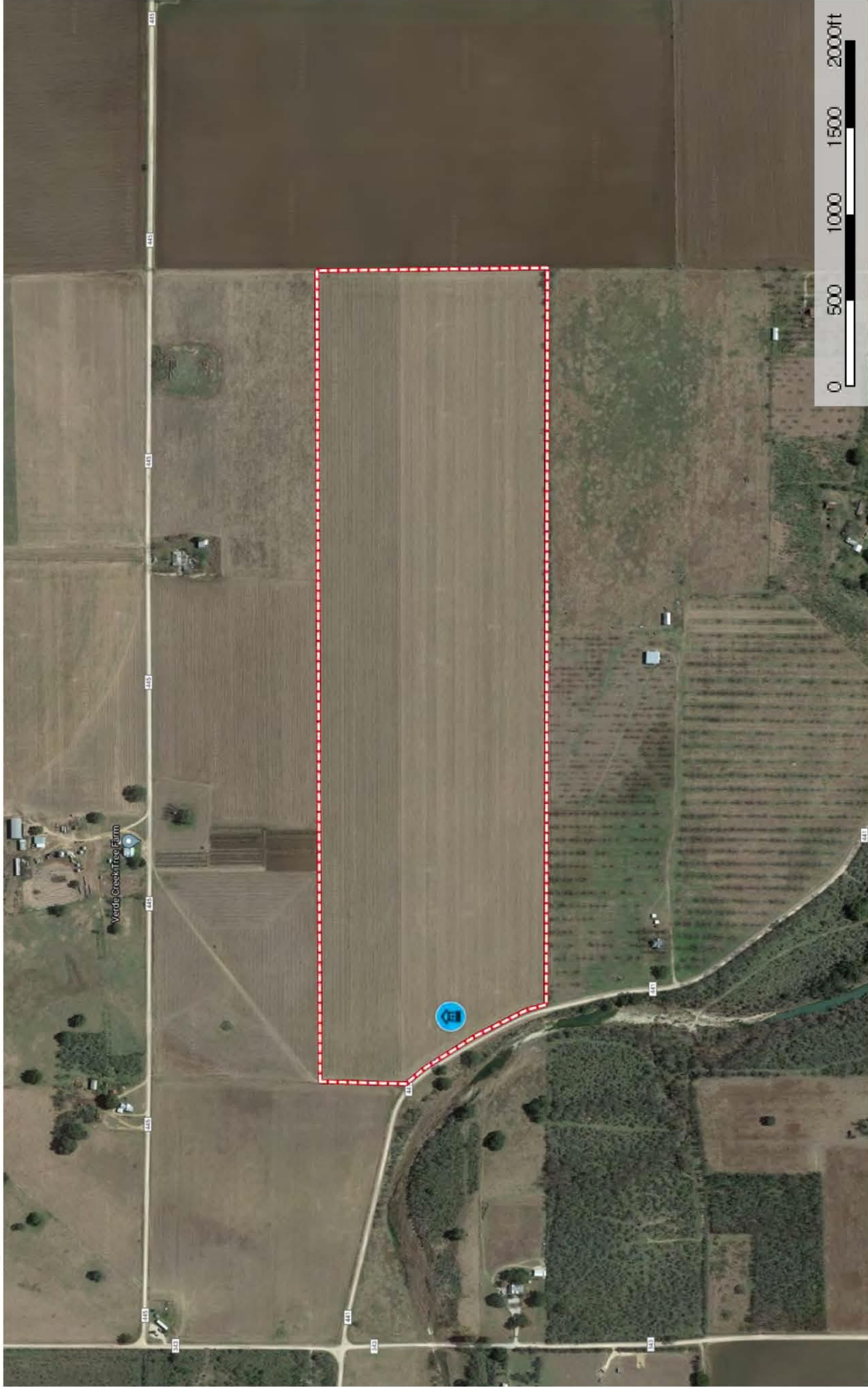
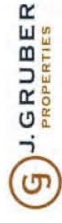
This established 104 +/- acre hay/grazing property is fenced on 3 sides with frontage on County Road 441. Productive, high yielding, ag exempt investment opportunity.

Please, call Jackie Stoner to schedule a showing. 830.931.4149.



104

Medina County, Texas, 104 AC +/-



J. Gruber - Broker / Owner
P: 830.426.5200 GruberRanches.com

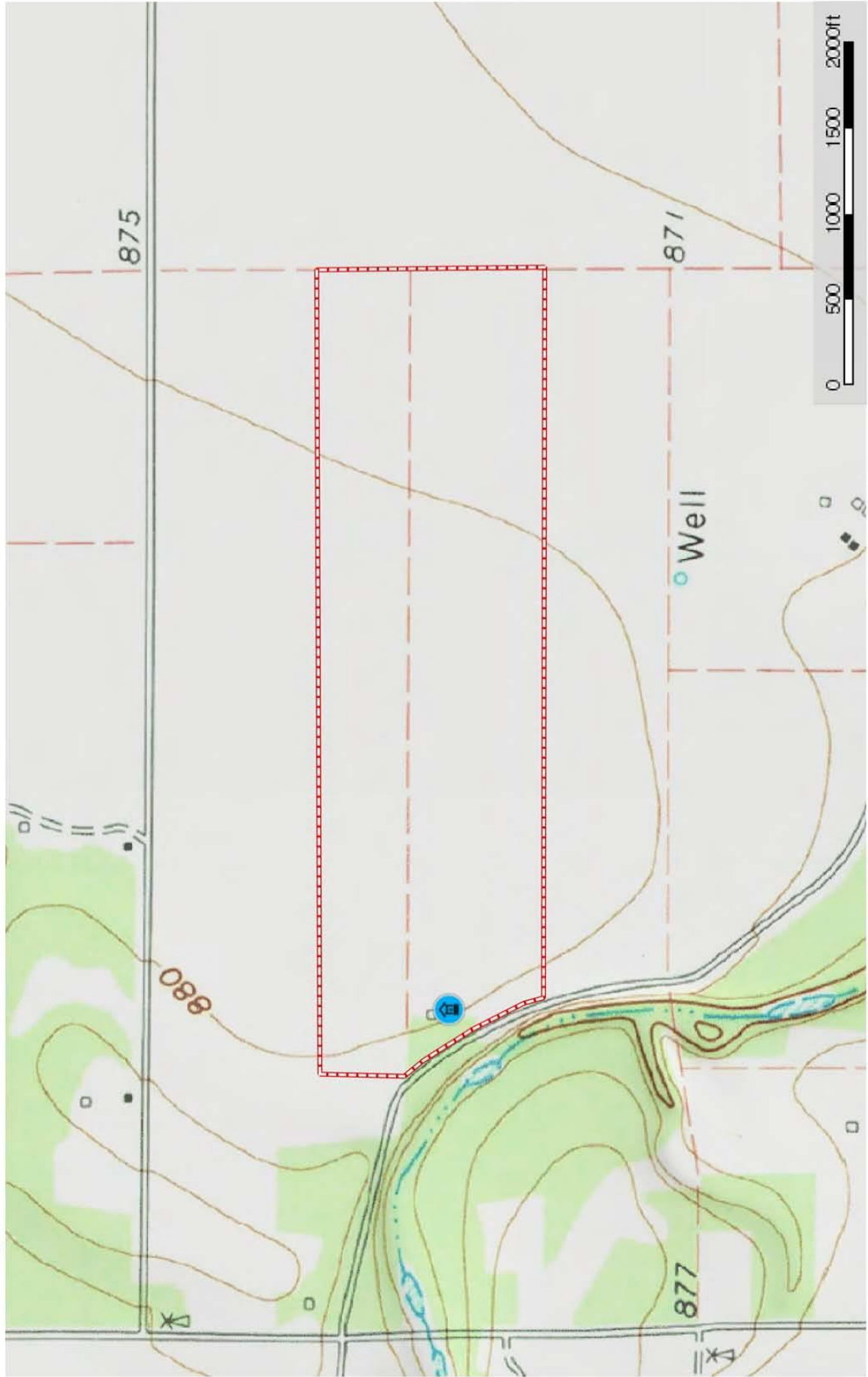
515 20th Street / Hondo, TX 78861



The information contained herein was obtained from sources deemed to be reliable. ManRight Services makes no warranties or guarantees as to the completeness or accuracy thereof.

104

Medina County, Texas, 104 AC +/-



J. Gruber - Broker / Owner
P: 830.426.5200 GruberRanches.com

515 20th Street / Hondo, TX 78861



The information contained herein was obtained from sources deemed to be reliable. MapInfo Software makes no warranties or guarantees as to the completeness or accuracy thereof.

Representing the Best of Texas



J. Gruber Properties and Gruber Ranch Sales

515 20th Street, Hondo, Texas 78861 O: 830.426.5200 | F: 830.426.5206 | info@jgruberproperties.com