



GRUBER RANCH SALES

Representing the Best of Texas



LOWER ELSTONE FARM

212 ACRES

We are excited to offer this 212 Acre farm, located just a few miles east of Hondo, TX, in beautiful Medina County. Fronting Lower Elstone Road, this showplace is just eight miles east of Hondo, and twenty-five miles west of San Antonio. It is very unique, in the fact that there is nothing like it, available for purchase. The Lower Elstone Farm boasts great production value, in the way of irrigated farm-land and grazing for livestock. This farm is fenced and cross-fenced, with approximately 115 acres in grazing (45 irrigated acres), and 83 acres in cultivation (63 irrigated acres). Two shallow irrigation wells, pumping a combined 800gpm, supply water to the two center-pivots, as well as a stock tank.

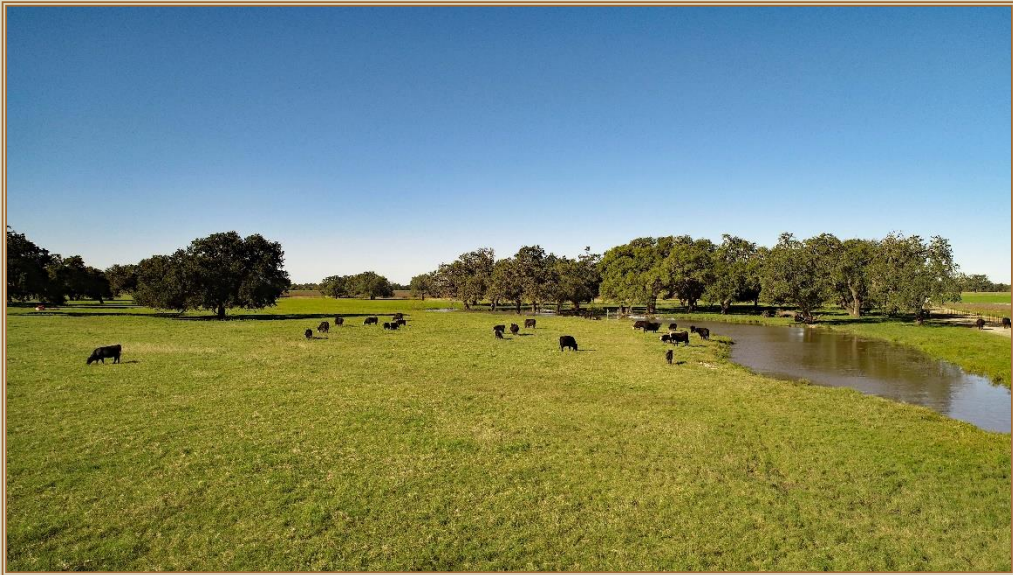
In addition to the immaculately maintained farm and ranch land, Lower Elstone Farm showcases approximately 2,000 feet of the Hondo Creek. Holding water year-round and through the recent drought, this portion of the creek is a great feature.

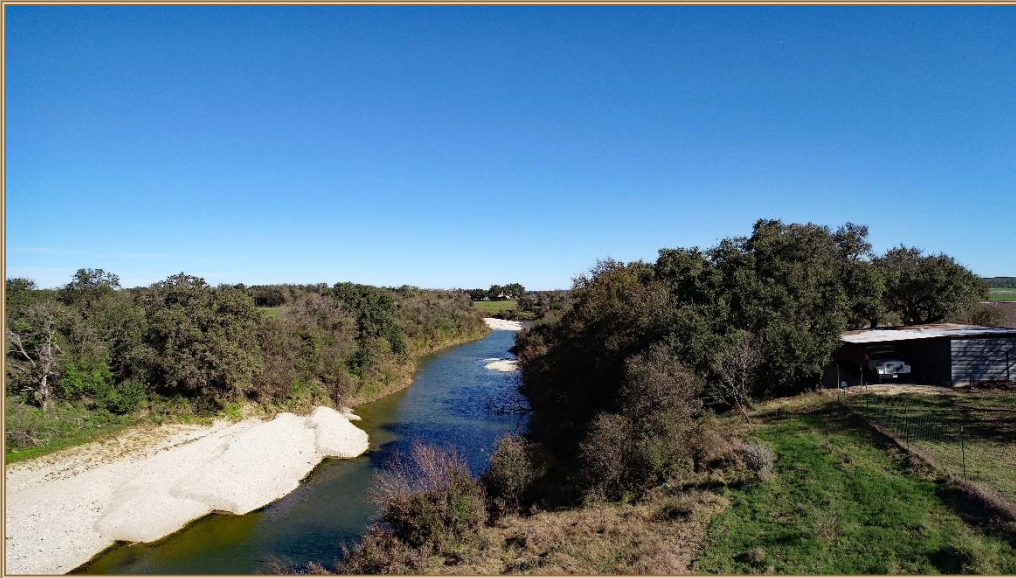
Lastly, groves of huge Live Oaks are scattered about the farm. Whether providing shade for cattle, or a backdrop for your home there are plenty to pick from.

To schedule a showing, please contact Jody Jacobs, at 210-827-7180.

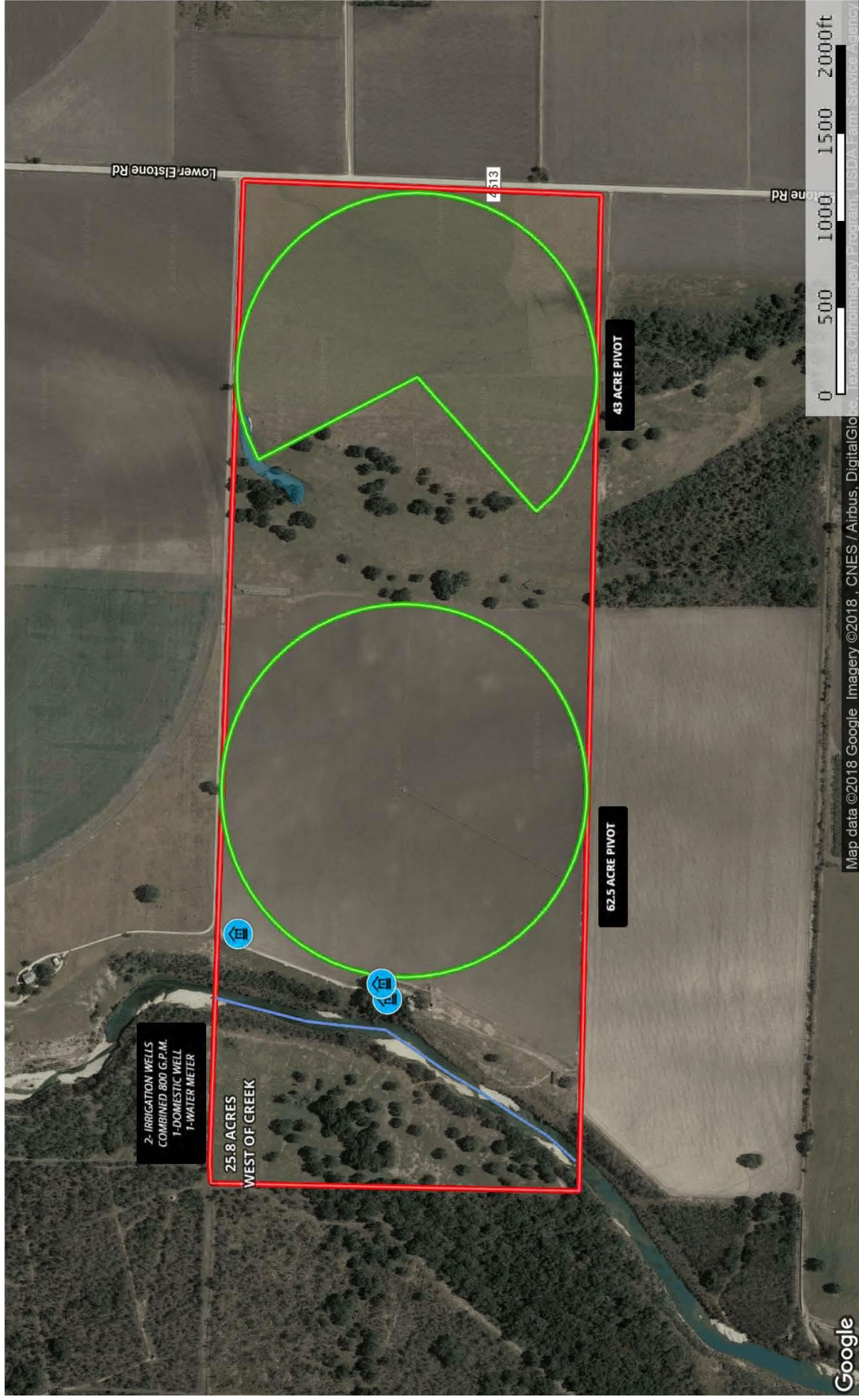
LOWER ELSTONE FARM







212 Acres - Stinson
Medina County, Texas, 212 AC +/-



- Well
- River / Creek
- Pond / Tank
- Pivot
- Boundary

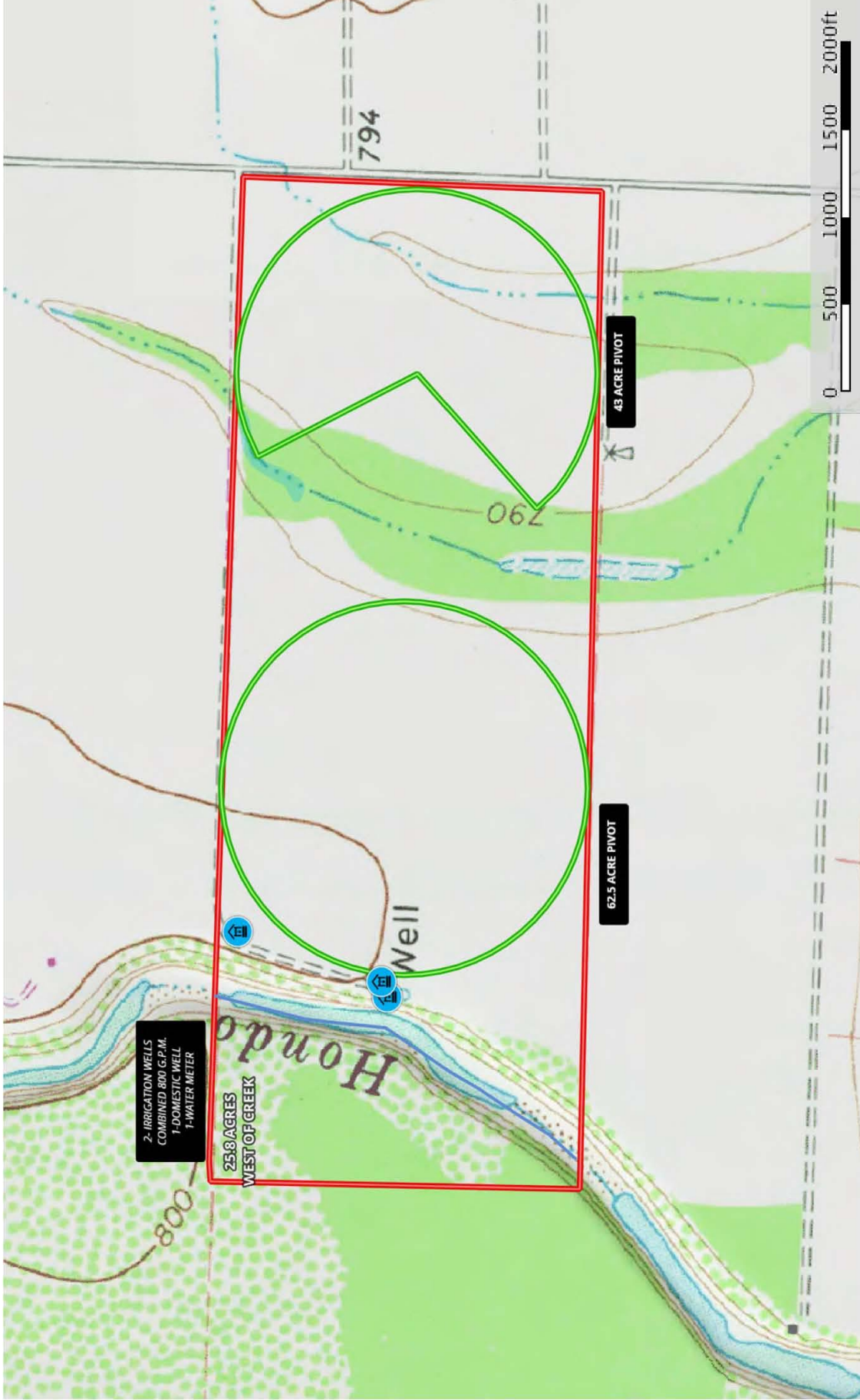
Google

Map data ©2018 Google Imagery ©2018, CNES / Airbus, DigitalGlobe, Texas Orthoimagery Program, USDA, Farm Service Agency

Jody Jacobs
P: 210-827-7180
jj@jgruberproperties.com

M
The information obtained herein was obtained from sources deemed to be reliable. MapRight Services makes no warranties or guarantees as to the completeness or accuracy thereof.

212 Acres - Stinson
Medina County, Texas, 212 AC +/-



2- IRRIGATION WELLS
COMBINED 800 G.P.M.
1- DOMESTIC WELL
1- WATER METER

25.8 ACRES
WEST OF CREEK

- Well
- River / Creek
- Pond / Tank
- Pivot
- Boundary

Jody Jacobs
P: 210-827-7180
jcyj@jgruberproperties.com

The information contained herein was obtained from sources deemed to be reliable. MapRight Services makes no warranties or guarantees as to the completeness or accuracy thereof.



Representing the Best of Texas



J. Gruber Properties and Gruber Ranch Sales

515 20th Street, Hondo, Texas 78861 O: 830.426.5200 | F: 830.426.5206 | info@jgruberproperties.com