



Artist Rendering of 1110 Devine Dr.*
Approx. Sq. Ft. \pm 1,748

Address

1110 and 1112 Devine Dr.
Devine, Texas 78016

Contact J. Gruber Properties
830-426-5200
jcg@jgruberproperties.com

Soon-to-be-complete! These two new construction homes are conveniently located in the Cactus Flats Subdivision north of Devine. Custom built with gorgeous curb appeal, these homes are each situated on a 1/3-acre lot. Both skillfully designed floorplans boast a welcoming entryway leading to the spacious family room with vaulted ceilings, a fireplace, and plenty of windows providing natural light. The dining rooms and kitchens are open to the family room and offer a center island and ample cabinets and counter space. The primary bedroom has vaulted ceilings, a generous walk-in closet, and double vanity. There are two other bedrooms with large closets and a shared bathroom. A centrally located laundry room and an upstairs bonus room over the 2-car garage ready for buildout completes this gem of a home!



Artist Rendering of 1112 Devine Dr.*
Approx. Sq. Ft. \pm 1,698

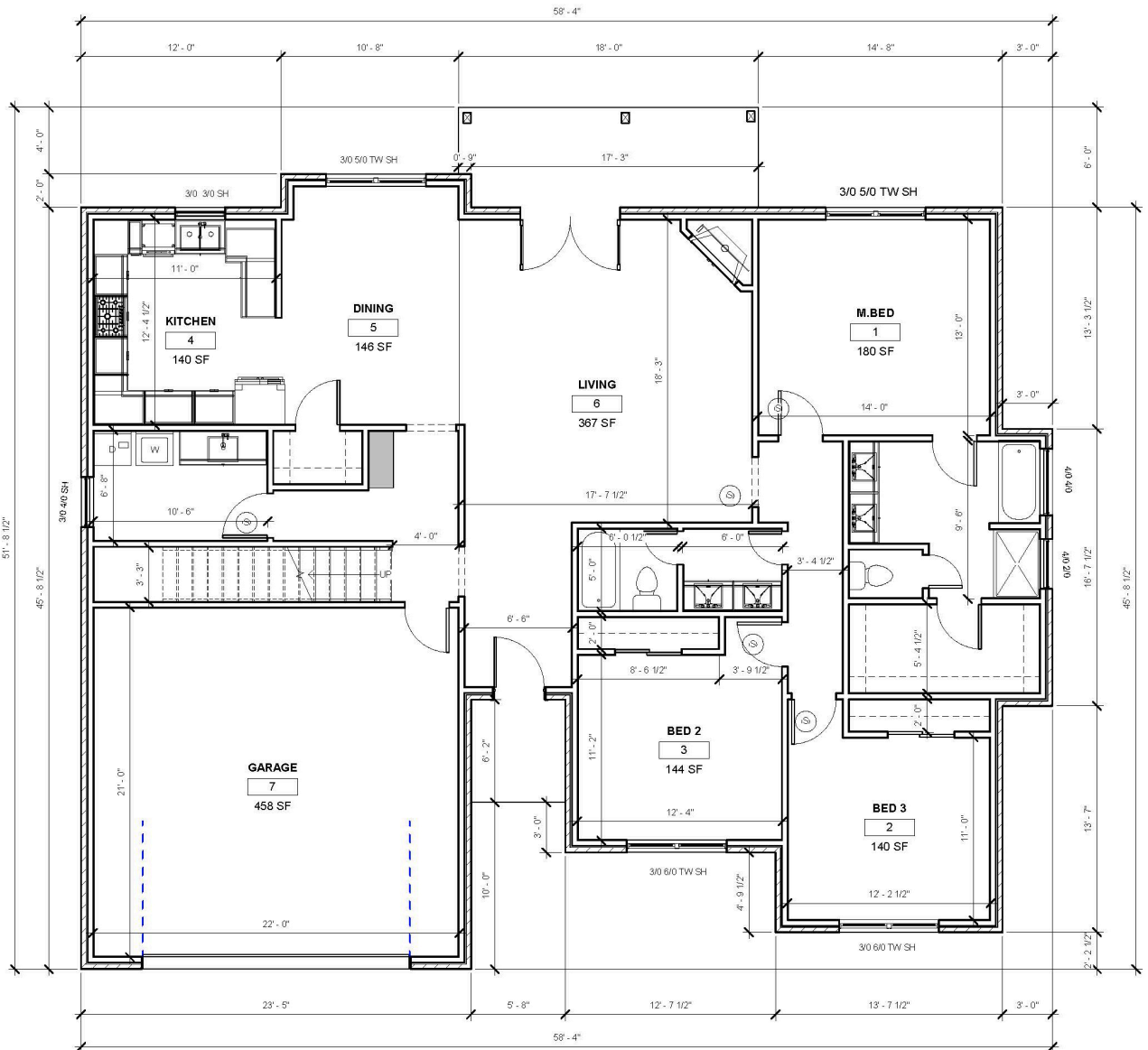
Highlights

- Open design floorplan with living room and dining room adjacent to the kitchen and with access to a covered patio
- Primary suite with vaulted ceiling, large walk-in closet, and double vanity
- Central laundry room
- 3 bedrooms / 2 baths
- 2-car garage
- Bonus room over the garage ready for buildout
- Large lot



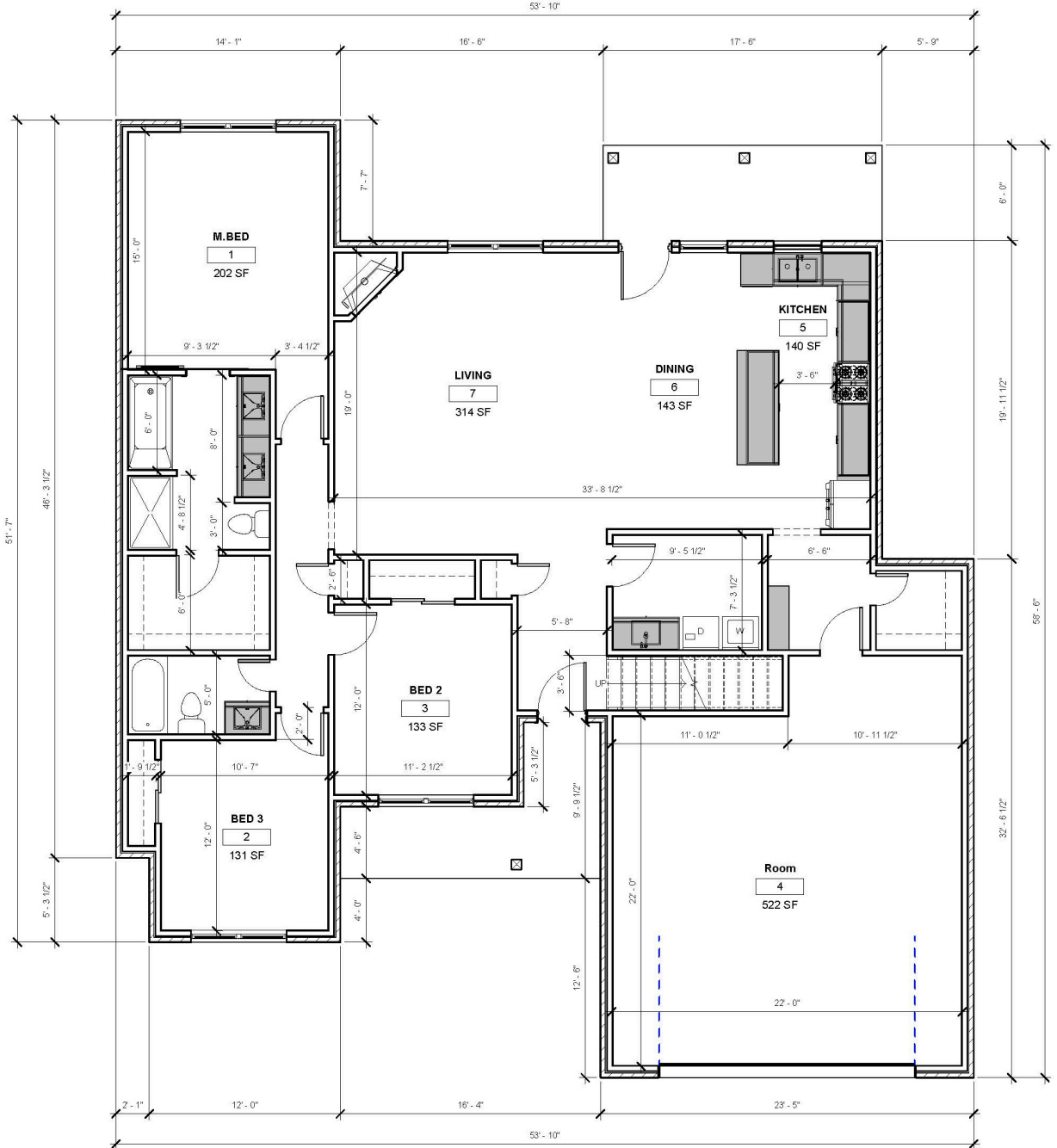
* Artist Rendering is for illustrative purposes only.
Materials and final finishes may differ from Artist Rendering.

1110 Devine Dr.



\$399,000 | 3 BR | 2 BA
Office 830-426-5200

1112 Devine Dr.



Artist Rendering of 1112 Devine Dr. *
Approx. Sq. Ft. ± 1,698



\$399,000 | 3 BR | 2 BA

Office 830-426-5200

