



J. Gruber Properties

Representing the Best of Texas



7.63 Acres
3286 CR 2615
Rio Medina, Texas

FEATURES

- New 30x30 insulated shop with 30x30 lean-to
- New net fencing with improved pastures
- New gutters, grass, and sprinkler system
- New HVAC with 16 inches of spray insulation in attic
- New outdoor party lighting

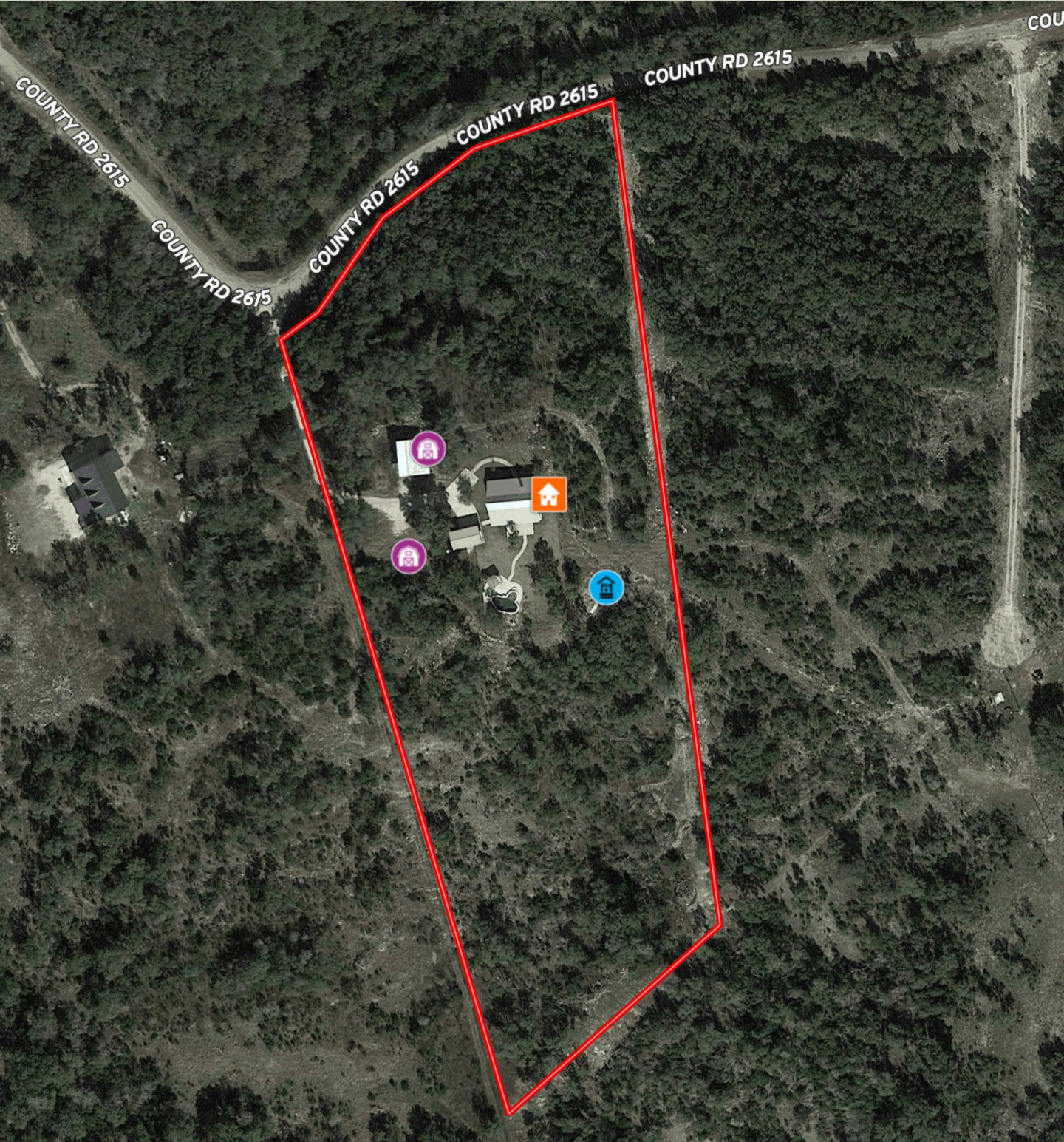




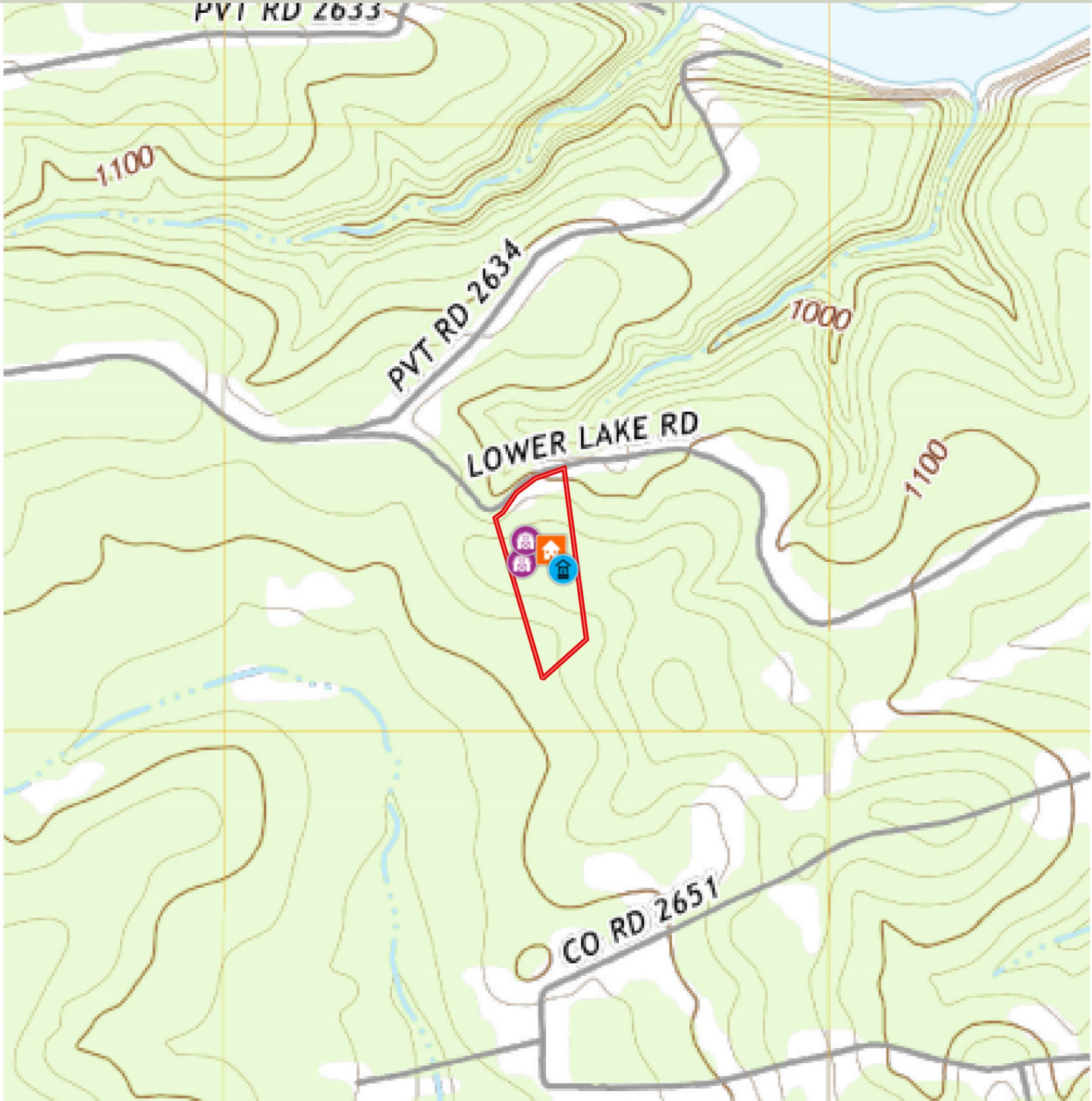
This 7.63-acre country estate is ideally located on CR 2615 just 3 miles south of Medina Lake and 2 miles north of Paradise Canyon with an easy drive to the surrounding areas such as San Antonio, Castroville, Rio Medina, and Hondo.



7.63 ± Acres | Medina County



7.63 ± Acres | Medina County



Country living within a short drive from San Antonio and with spectacular views that go on for miles. This gorgeously designed and well-built home boast wood and tile flooring, granite counter tops throughout, and custom cabinetry. The home, with its upscale amenities and open floor plan, consists of three bedrooms and two baths, an eating area, a utility room, and stainless steel appliances in the kitchen. Next to the house is a two car carport with a



storage area and a beautiful custom swimming pool. Also located on the property is a 1,404 sq. ft. pole barn ideal for trailers and 720 sq. ft workshop with a large extended lean-to.













